

**WHICKHAM**  
SCHOOL & SPORTS COLLEGE



**WHICKHAM**  
SCHOOL & SPORTS COLLEGE

Whickham School and Sports College,  
Burnthouse Lane, Whickham  
Newcastle upon Tyne NE16 5AR

T: 0191 4960026 F: 0191 4880968  
sixthform@whickhamschool.org

[www.whickhamschool.org](http://www.whickhamschool.org)



Sixth Form Prospectus 2012

**OUTSTANDING IN  
EVERYTHING WE DO**



**Georgia**  
**Business Studies / English**  
**Language / History**

**“I wouldn’t be doing so well if it hadn’t been for the fantastic teaching and support at Whickham school”**

# WELCOME

**Whickham Sixth Form is a special place that will make you feel welcome and encourage you to succeed. It is a vital part of the school and is given the status it deserves. Sixth Form students are young adults who are important role models and leaders in the school community.**



Our new Sixth Form centre opened last January, providing the learning environment our students deserve. There are spacious study areas with high quality wireless network access as well as fixed computers in the learning resource area. Current students have been involved in the design to ensure that the facility meets all learner needs. We have a very successful Sixth Form because we expect a lot of ourselves and our students.

We provide the challenge and support that is necessary to achieve at the highest level and we never rest on our laurels. The vast majority of our students progress to university, with a number going on to Oxbridge. Those who choose not to go to university are well prepared for employment or further training and are given support and guidance to ensure they are successful in their chosen path.

Whilst expecting students to work hard on their studies we want to encourage active participation in a wide array of extracurricular opportunities. Drama, dance, sport, debating, community volunteering, charitable fund raising and a range of trips all of the world make Whickham School an exceptional place to study.

Academic success is clearly the main focus of the Sixth Form, but it is not the only aspect. We want to develop those qualities and attributes that prepare young adults for whatever life ahead may have in store. We want our students to be confident, self reliant, motivated, resilient and compassionate. There will be many opportunities ahead and we want our students to be in a position to make the very best of them.

**Steve Haigh**  
**Headteacher**

**OUTSTANDING IN  
EVERYTHING WE DO**

# FACILITIES

The sixth form is housed in a brand new purpose built state-of-the-art building.

The centre houses all of the sixth form facilities:

- Offices where you can find the Head of Sixth Form and Heads of Year
- Sixth Form Reception
- Silent Study Area
- Sixth Form Cafeteria
- Sixth Form Computer Suite
- Classrooms
- Careers office
- Social Area

## THE SILENT STUDY AREA

The silent study area is one of the most used resources in the sixth form building. It was specifically requested by students and is well used. It houses a large amount of open plan personal study space as well as almost 20 computers for study use. The study area is open daily until 6pm and is frequently well used after school.



## THE SIXTH FORM CAFETERIA

Sixth formers have use of the sixth form cafeteria which is open daily from 10am until 1pm. A wide selection of snacks and hot food is sold.

## THE CAREERS OFFICE

Students receive one to one information, advice and guidance about their options after sixth form. The majority of students go on to university (some after a gap year) with some going into other forms for training or employment.

# HEAD OF SIXTH FORM

## Mr Wheatley

Progressing from compulsory to post-compulsory education can be one of the most exciting times of a student's life. It can also be one of the most daunting. Whicham Sixth Form is a caring and dynamic environment in which to study. We have high expectations of our students and in turn expect them to have high expectations of themselves. The Sixth Form prides itself on helping all students achieve their potential.

We offer one of the widest range of courses of any school sixth form. This will allow you to build upon your achievements and extend your skills and knowledge in A-level and BTEC programmes. In addition to your academic studies you will be encouraged to take part in a variety of activities, all of which go towards helping with your personal development and increase your self confidence.

The Sixth Form will challenge you in a variety of ways. Sixth Formers are encouraged to look forward to a future of opportunity and an early emphasis on careers education will enable you to successfully move into higher education or employment.

Being part of a community is important and you will be expected to support the rest of the school as a positive role model, whilst being part of the Sixth Form with its own unique identity. Freedom comes with responsibility and you will be expected to work hard.

Your time at Whicham Sixth Form will be one of the most exciting and important times in your life. We look forward to meeting you in September.

Good luck in your summer examinations.

**Mr Wheatley**  
Head of Sixth Form



**OUTSTANDING IN  
EVERYTHING WE DO**

# RESULTS

The January 2011 league tables from the DfE confirmed that we were **Gateshead's top performing sixth form** with more students exceeding their nationally expected progress than anywhere else. The most recently published data confirms that progress in A2 and BTEC courses continues to be **outstanding**.

Subject	Entries	A*	A	B	C	D	E	U	% A* - B
Art & Design	1	0	1	0	0	0	0	0	100.0%
Biology	16	0	2	3	4	4	2	1	31.3%
Business Studies	26	4	10	8	4	0	0	0	84.6%
Chemistry	7	0	2	2	2	1	0	0	57.1%
D&T Product Design	1	0	0	0	0	1	0	0	0.0%
D&T Textiles Technology	7	1	1	2	2	1	0	0	57.1%
Drama	10	0	3	3	1	2	1	0	60.0%
Economics	11	1	3	2	4	1	0	0	54.5%
English Language	46	0	4	8	19	10	5	0	26.1%
English Literature	25	4	3	9	7	2	0	0	64.0%
Geography	12	0	4	2	3	3	0	0	50.0%
German	6	0	2	1	2	1	0	0	50.0%
Government & Politics	8	0	2	3	2	1	0	0	62.5%
History	17	0	5	5	7	0	0	0	58.8%
Mathematics	13	0	3	4	3	3	0	0	53.8%
Media Studies	9	0	3	2	3	1	0	0	55.6%
Music	2	0	0	0	1	1	0	0	0.0%
Physics	10	0	1	1	3	3	1	1	20.0%
Psychology	11	0	2	1	5	3	0	0	27.3%
Religious Studies	1	0	0	0	1	0	0	0	0.0%
Applied Science	16	0	0	1	3	9	3	0	6.3%
Sociology	6	0	0	1	3	2	0	0	16.7%
Sport/PE Studies	22	1	1	7	8	3	2	0	40.9%

In August 2011 Whickham students achieved even better success with **54% of all grades awarded at A\*- B** and an impressive **pass rate of 99.6%**.

# 40%

of all grades were A or A\*

Subject	Entries	A*	A	B	C	D	E	U	% A* - B
BTEC Health NA (single)	6	1	5	0	0	0	0	0	
BTEC Health NC (double)	4	0	2	0	1	0	1	0	91.0%
BTEC Health ND (triple)	57	0	53	0	4	0	0	0	
BTEC Business NA (single)	6	1	5	0	0	0	0	0	80.0%
BTEC Business NC (double)	4	0	2	0	1	0	1	0	
BTEC ICT NA (single)	5	1	1	0	3	0	0	0	17.6%
BTEC ICT NC (double)	12	0	1	0	7	0	4	0	
BTEC Sport NA (single)	3	1	1	0	1	0	0	0	
BTEC Sport NC (double)	20	0	13	0	7	0	0	0	72.4%
BTEC Sport ND (triple)	6	0	6	0	0	0	0	0	
BTEC Travel NA (single)	9	0	5	0	3	0	1	0	55.6%
BTEC Art NA (single)	8	0	5	0	1	0	2	0	
BTEC Art NC (double)	6	0	3	0	3	0	0	0	48.8%
BTEC Art ND (triple)	27	0	12	0	11	0	4	0	
BTEC Dance NA (single)	5	0	5	0	0	0	0	0	100.0%
<b>Totals</b>	<b>461</b>	<b>15</b>	<b>171</b>	<b>65</b>	<b>129</b>	<b>52</b>	<b>27</b>	<b>2</b>	
<b>% per grade</b>		<b>3.3</b>	<b>37.1</b>	<b>14.1</b>	<b>28.0</b>	<b>11.3</b>	<b>5.9</b>	<b>0.4</b>	

# ENRICHMENT

**WHICKHAM SCHOOL AIMS TO BE VERY MUCH AT THE HEART OF THE COMMUNITY AND OUR LARGE SIXTH FORM PLAYS A FULL AND ACTIVE PART IN HELPING ACHIEVE THIS.**

## CHARITY WEEK

The Annual Sixth Form Charity Week is long established, but our students continue to amaze with their enthusiasm and ingenuity in raising money for deserving causes. The students nominate the charity themselves which is usually linked to helping young people in adverse circumstances.

This year the Year 12 students chose to help the Sol Curry Charitable Trust which raises money to support children with Downs' syndrome. A full week of activities took place with the whole school involved in our Variety Show, Teacher Sumo Wrestling, non-uniform day and Whickham X Factor final. A host of smaller events were also held throughout the school. Over £9000 was made whilst also raising awareness of a very worthy charity.

## SCHOOL BAND

The School Band always has a strong sixth form presence as do the various school productions, which include sixth form musicians, actors / actresses, dancers and the back stage crew.

## SPORTING ACTIVITIES

All students can take part in a range of activities such as Zumba, football, climbing, Fitness on a Wednesday afternoon, or they can complete a level 2 Sports Leaders Award.

There is a Sports Leadership Presentation evening which is organised and run by the level 2 leaders and the Sports Ambassadors. It celebrates the amazing community work our students have carried out over the year.

All students in the sixth form have the opportunity to obtain a qualification in sports leadership. If taken through and completed in year 13 the qualification also carries points for UCAS applications.

## WORLD CHALLENGE

Community involvement at Whickham School extends worldwide and last year a number of the sixth form students organised a World Challenge visit to Mexico. The students, led by Mr Golightly, endeavoured to have a positive and sustainable impact on communities building on work done by previous students on trips to India, Namibia and Bolivia. Current students are working towards a trip to Ethiopia.

*World Challenge Expedition to Mexico - Year 11, 12 and 13 students take up the challenge and complete an 8-10 day trek and an environmental or community project.*



*World Challenge to Mexico - Collecting turtle eggs, hatching and releasing the young back into the sea.*

## DUKE OF EDINBURGH

Every year a large number of sixth form students complete the Duke of Edinburgh award either at Bronze or Gold level. The award is run at school and all expeditions / training is organised through the school. For more information please see Mr Golightly.



**OUTSTANDING IN EVERYTHING WE DO**



“Coming back to Whickham was the right decision – the staff really helped us settle into sixth form and prepare for university”

## A VIEW FROM THE HEAD BOY AND HEAD GIRL

As Head Boy and Head Girl, we have the responsibility of representing Whickham School, both within the school and the local community, as well as being the head of student voice. Our term runs from April to April, meaning we are already half way through.

We were selected as Head Boy and Head Girl after a demanding application process. Firstly we had to write a letter, explaining why we believed we were right for the role, and if successful this was followed by an interview.

Over the past six months we and our fellow deputies have been heavily involved with a variety of different things, ranging from interviewing prospective teachers through to chairing the student council, which is fundamental to ensuring that the students have a way to communicate with the management of the school. Chairing the student council has been both a rewarding and challenging experience, and has definitely been one of the highlights of the past 6 months.

In the six months to come, we look forward to the numerous challenges that the role brings. These include speaking at our annual carol service, organising the yearbook and also organising the leavers ball, all of which we look forward to. We have received continual support from all the teachers within the school, and would like to thank our deputies and sixth form ambassadors, Head of Year Mrs Dowling, Head of Sixth Form Mr Wheatley, Assistant Headteacher Mrs Patterson and Headteacher Mr Haigh for their support.

## WHERE ARE THEY NOW?

Every year the majority of students choose to progress into Higher Education (2010: 70%, 2011: 71%). Most of the remaining students seek employment or apprenticeships.

The students featured all took the university route and demonstrate the range of opportunities available.

**Lucy Zwolinksa** left Whickham with A-levels in English Language, English Literature and Drama and Theatre Studies. She is in her first year of studies at Glasgow University. She is really enjoying university life and aims to have a career in the publishing industry

**Matthew Bracchi** has gone to Aberdeen University to study medicine after completing A-levels in Biology, Chemistry and PE. He is working hard but really enjoying the course. He is in his first of five years. He is hoping to move back and work in Newcastle after completing his degree.

**Katie Hardy** left Whickham with straight A grades in French, German, English Language and English Literature winning the Best A level Results Award for her year group. Katie is reading Modern and Mediaeval Language at Murray Edward College, Cambridge. “I could not have chosen a better combination of A-Levels as my French and German are obviously essential but English Literature has helped when studying French Literature and German Linguistics utilises the analytical and language skills developed in English Language”. Katie describes her time so far as “Hard Work”, with 40 hours per week of scheduled contact time, but also as “Very enjoyable”. Katie is looking forward to her this year aboard. She is also enjoying life in Cambridge which she describes as “Very like Durham City”. She has made lots of new friends and represents the college in netball.

# NEW TO WHICKHAM SCHOOL

Starting a new school can be a daunting experience, but each year over thirty students, having studied GCSEs at other schools, decide to study in our sixth form. Below are details of students who joined Whickham from other schools.

Andrew Wakefield, Kelsie Hodgson, Cameron Simmonds and Daniel Graham joined us from Hookergate School (now Charles Thorpe Comprehensive). All the students considered that Whickham was for them as they could select the subjects that they were particularly interested in. All the students commented on how welcome they had been made.

Andrew is currently studying Physics, Biology and Mathematics and is applying for geoscience at university.

Kelsie is currently studying English, Sociology and BTEC IT. She hopes to secure a university place to study psychology.

Cameron is currently studying Art, History and PE. He is applying to university with the aim of becoming a primary school teacher.

Daniel is studying Biology, Chemistry and Geography. He has applied to university to study medicine.

Amy Coulson, Aaron Christie and Bethany Nielson joined us last year from Kingsmeadow School. They joined us not only because we could offer the combination of subject choices that they wanted but also because the school had a fantastic reputation and a high success rate. They are studying a variety of subjects including; Acting, Art, Biology, Chemistry, Economics, English, Maths, RE and Sociology

John Edwards joined us from Emmanuel College because Whickham offered the courses that he wanted to take and because he knew other people who would be coming.

Zain Ali joined us from Joseph Swan to study Business, Biology, Chemistry and Mathematics. He chose Whickham because he was impressed by the examination results and pass rate.

Katie Goodfellow joined us from Tanfield School to study English language and the Creative and Media Diploma. She already knew people at the school and knew the school had a good reputation for the quality of teaching and learning.

Finally, Bradley Tan joined from Kings School and is studying French, English, Turkish and Mathematics. Bradley cites the excellent reputation of the sixth form as one of the main reasons he decided to move school. He has found that he is treated like an adult and has made many new friends. Bradley is hoping to take his language studies further at Oxford university.

## Jack Hall

Jack joined us from Hookergate school and is currently studying the BTEC Extended Diploma in Sport having also studied Sociology last year. Jack is one of the top BMX riders in the country and was impressed with the sporting and study facilities on offer here.

# GUIDANCE AND SUPPORT

All sixth formers spend tutorial and CFL time in an allocated tutor group where school and pastoral matters are discussed and futures are mapped out. Your tutor and fellow students will be important to you in your time in the sixth form.



Advice on higher education and careers is available and many an exciting charity week idea has been hatched during a CFL meeting. As well as your tutor, Mr Wheatley, Mrs Dowling, Ms Cooper, Mrs McGuigan and Mrs Taylor will always offer help, guidance and encouragement. A structured induction programme ensures that you will enter Whickham Sixth Form at ease and be happy in your new surroundings and choice of subjects.

A two-day induction course is held to assist you in getting to know fellow students, particularly those

in your tutor group some of whom may be from other schools. Day 1 at Federation Breweries sees curriculum and pastoral matters discussed and group activities taking place. Day 2 is spent in tutor groups on a walk where you get to know your tutor and other members of the tutor group much better.

Even before you join the sixth form, support and guidance is provided to ensure you progress into Year 12 happy with your choice of subjects and clear in what you can expect. In January of Year 11 a parent/student conference will provide an

introduction to what is available in the sixth form. This is followed by a subject evening allowing you to discuss courses with subject teachers.

February 2012 gives you the opportunity, with your parents, to meet senior staff to discuss possible options and have any queries answered.

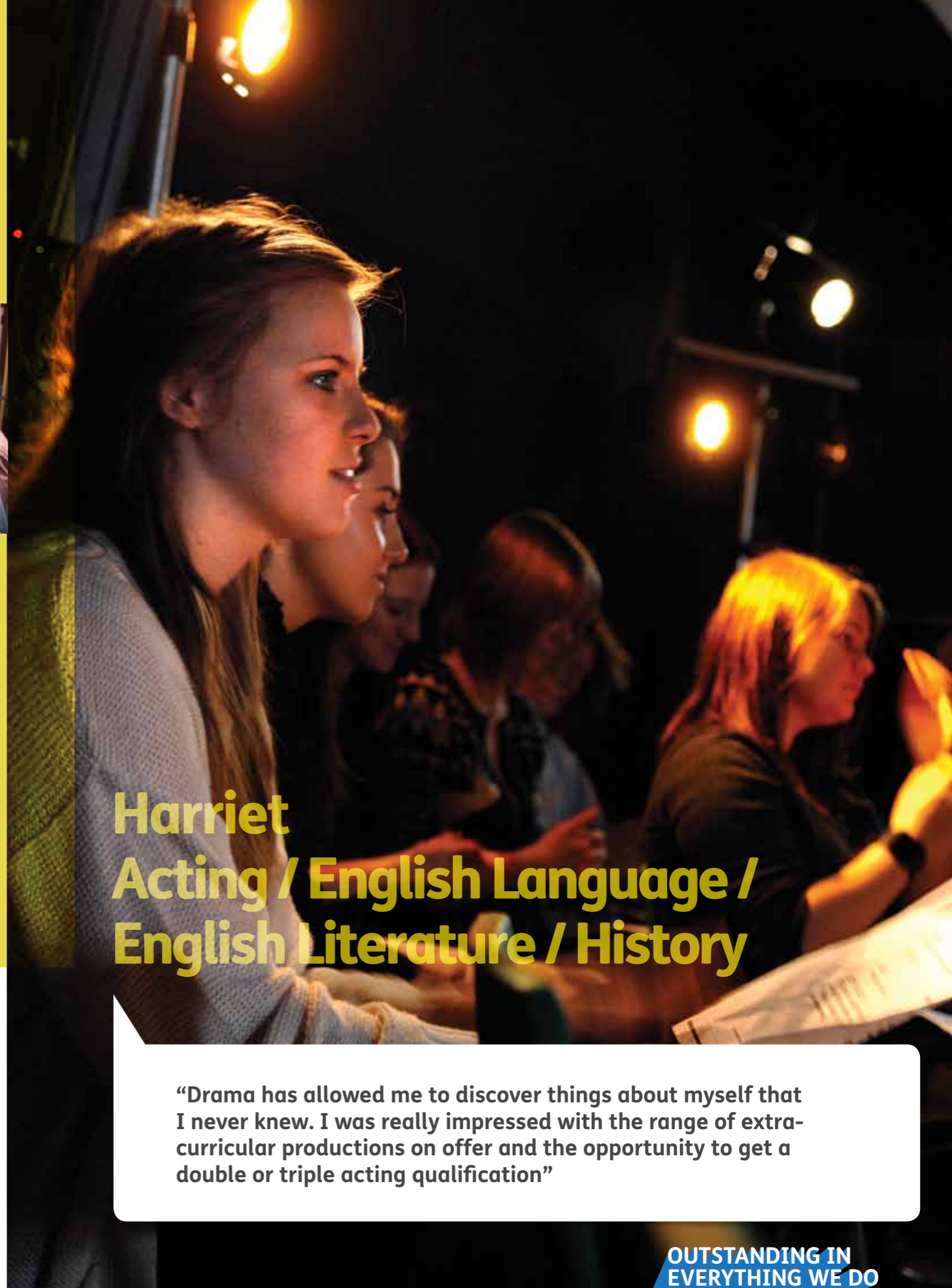
Immediately following the GCSE examinations in July prospective sixth formers meet for an induction morning. Arrangements for enrolment are discussed and a buffet lunch.



## PROGRESSION INTO YEAR 13

Students on A-level courses progress automatically into year 13 providing that they have secured a pass grade in their subject. Students studying for 4 qualifications usually drop one subject as they move from year 12 to year 13.

Where a student has not been successful in all of their qualifications they will normally meet with the Head of Sixth Form to discuss how the school can best support them in moving forward. This can involve reconsidering some subject options.



**Harriet**  
**Acting / English Language /**  
**English Literature / History**

**“Drama has allowed me to discover things about myself that I never knew. I was really impressed with the range of extra-curricular productions on offer and the opportunity to get a double or triple acting qualification”**

**OUTSTANDING IN EVERYTHING WE DO**



**Chengetayi**  
**Business / Economics /**  
**Geography / Science**

**“I really enjoy my lessons –  
 the teachers make them challenging and interesting”**

# STAFF & STUDENT GUIDELINES

## ATTENDANCE AND PUNCTUALITY

Attendance and punctuality are vital if success is to be achieved on sixth form courses. Punctuality at tutorial time, lessons and in the production of homework and coursework are also expected and failure to produce work on time can lead to modules being repeated.

## THE PASTORAL PROGRAMME

The sixth form programme concentrates in areas which have not been fully covered in the Lower School. Study skills and time management are

dealt with early in Year 12 and stress management appears at examination time. A lot of time is spent on one-to-one reviews. Year 13 sees a full programme of advice and guidance for higher education, including UCAS form completion, careers interviews and advice on grants and loans.

## ASSEMBLIES

Sixth form assemblies happen on a fortnightly basis. Parents have the right to withdraw their child from collective worship. To do so please write to your son/daughter's Head of Year.

## RELIGIOUS EDUCATION

The School has a statutory obligation to deliver Religious Education in the sixth form. This is done through offering Religious Education A-level, through elements of study in Sociology and General Studies and through tutor time. Parents have a statutory right to withdraw their child from Religious Education in the sixth form. To do so please write to your son/daughter's Head of Year.

## CODE OF DRESS

Students are required to dress in a manner that would be acceptable within the workplace. Sixth form uniform guidelines are detailed below. All students receive a letter informing them of the code of dress as part of the induction process.

### MALE

- Formal shirt and tie
- Plain V-neck sweater (small logo)
- Plain dark trousers in a formal style
- Shoes (black or brown)
- Boots can be worn in severe weather but must be in a formal style

### FEMALE

- Formal shirt or plain round necked top (no low cut tops)
- Plain crewneck sweater (small logo)
- Plain dark trousers in a formal style
- Plain dark skirt, of a suitable length
- Plain black or beige tights
- Shoes (black or brown)
- Boots can be worn in severe weather but must be in a formal style

### PE/DRAMA UNIFORM

- School PE/Drama top
- Dark tracksuit bottoms
- Black or white trainers
- Vests or sleeveless T-shirts, trainers, jeans, shorts, culottes, excessively tight trousers or those made from ribbed stretch material, face jewellery and headwear (except those relating to faith) are not acceptable.

A discreet amount of makeup and jewellery is acceptable. Students who do not adhere to the code of dress will be sent to their Head of Year.

# STAFF & STUDENT GUIDELINES

## THE STUDENT CONTRACT

### Sixth Form Student Agreement

We believe that if you start the Sixth Form with an understanding of what you can expect us to provide and what we require you to do then there will be few problems thereafter. Above all we seek your happiness and success but to achieve the latter we need a particular type of commitment from you.

*The school will always endeavour to provide:*

- 1 Guidance which is personal and relevant throughout the student's career.
- 2 Information on grants, careers, open days and student concessions.
- 3 Effective assessment and reviewing to ensure the most successful course is being pursued.
- 4 An appropriate learning environment including adequate library, study and computer facilities.
- 5 Opportunities for personal development beyond the normal curriculum of the school.
- 6 Regular consultation with teachers, parents and outside bodies.
- 7 A friendly, confrontation free and happy stay in the Sixth Form.

*The student will always endeavour to*

- 1 Attend school regularly and punctually and inform the school office of absence on the first day.
- 2 Behave in a mature and socially acceptable manner at all times.
- 3 Adhere to school policy including the code of dress.
- 4 Take full advantage of extra-curricular activities.
- 5 Participate in the teacher / tutor review process.
- 6 Organise part-time employment and leisure in such a way as to ensure adequate time for homework and additional research work.
- 7 Fulfil the requirements of the course.

## Hana Triple Sport / German

**Nominated as Gateshead Young ambassador for Sport.**

**“It's been a fantastic experience which has given me many exciting opportunities such as leading a work shop at the National Sports College conference last year. It has helped me in my transition from school to University”**



**OUTSTANDING IN EVERYTHING WE DO**

# THE BURSARY FUND

The school is provided with funds from the government to support students for whom there would otherwise be a financial barrier to participation in sixth form study.



There are two levels of bursary available:

#### FULL BURSARY

Available to students who have been in care or have to support themselves independently

#### CORE BURSARY

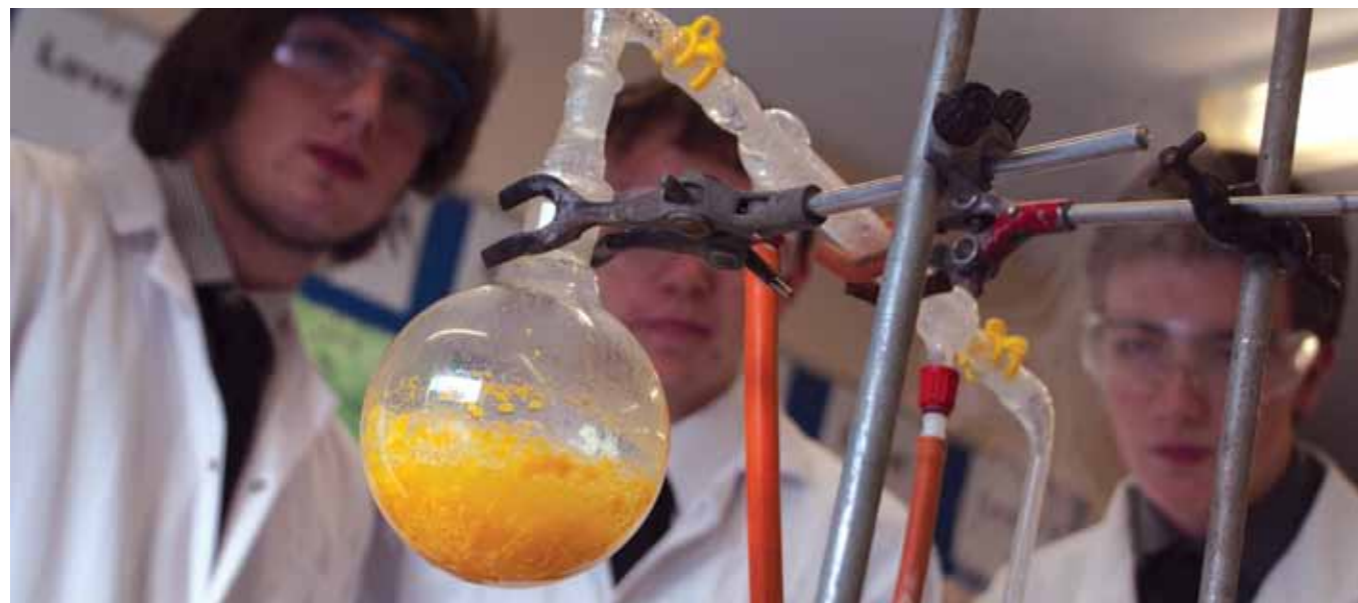
Available to all students who are registered for free school meals

The amount of each bursary is reviewed each year depending on the funding allocated by central government. In 2011/12 the full bursary was worth £1200.

Students who wish to apply should obtain a bursary application form from their Head of Year.

#### HARDSHIP AND EMERGENCY FUNDING

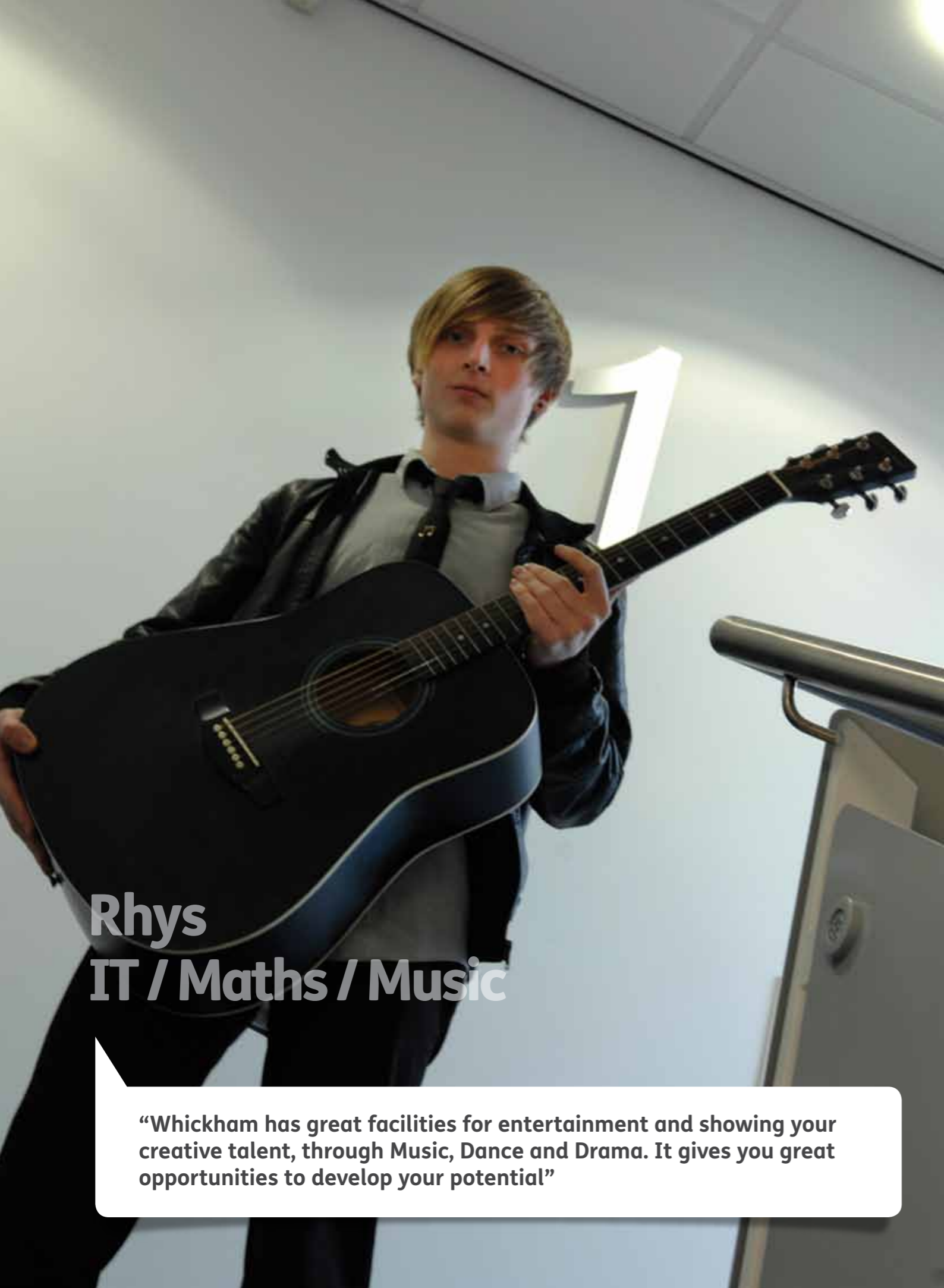
We retain a small contingency fund within the bursary funds to meet any temporary hardship and emergency needs of students. Students who wish to apply should in the first instance see their Head of Year.



Joe  
Acting / English Language / IT

“Sixth form is completely different to year 11. The relationships you have with teachers are really different – they get to know you really well and offer feedback and support”

OUTSTANDING IN  
EVERYTHING WE DO



**Rhys**  
**IT / Maths / Music**

“Whickham has great facilities for entertainment and showing your creative talent, through Music, Dance and Drama. It gives you great opportunities to develop your potential”

**OUTSTANDING IN  
EVERYTHING WE DO**