



NCEA

JBVI

YOU DON'T NEED TO TRAVEL FAR TO GET AHEAD



Key Stage 5

2017 – 2019

Contents

3 - Welcome to JBVI

5 - Support and Guidance at JBVI

6 - Extra-Curricular Opportunities at JBVI

7 - For which courses should I apply?

9 - Bespoke Pathways

11- A-Level Courses

- Art and Design
- Biology
- Chemistry
- Economics
- English Language
- English Literature
- EPQ
- French
- Geography
- History
- Maths
- Music
- Physics
- Psychology
- Religious Studies
- Sociology

18- Level 3 Vocational Courses

- Business (single & double)
- Childcare (double)
- Construction (double)
- Creative Media Production (single)
- Food Science and Nutrition (single)
- Health & Social Care (double)
- ICT (single & double)
- Music (single)
- Performing Arts (single)
- Science (single)
- Sport (double)
- Uniformed Services (double)

25- Level 2 Courses

- Business
- Childcare
- Construction (double)
- Hospitality & Catering
- ICT
- Teamwork & Personal Development in the Community

27- Important information about Sixth Form study

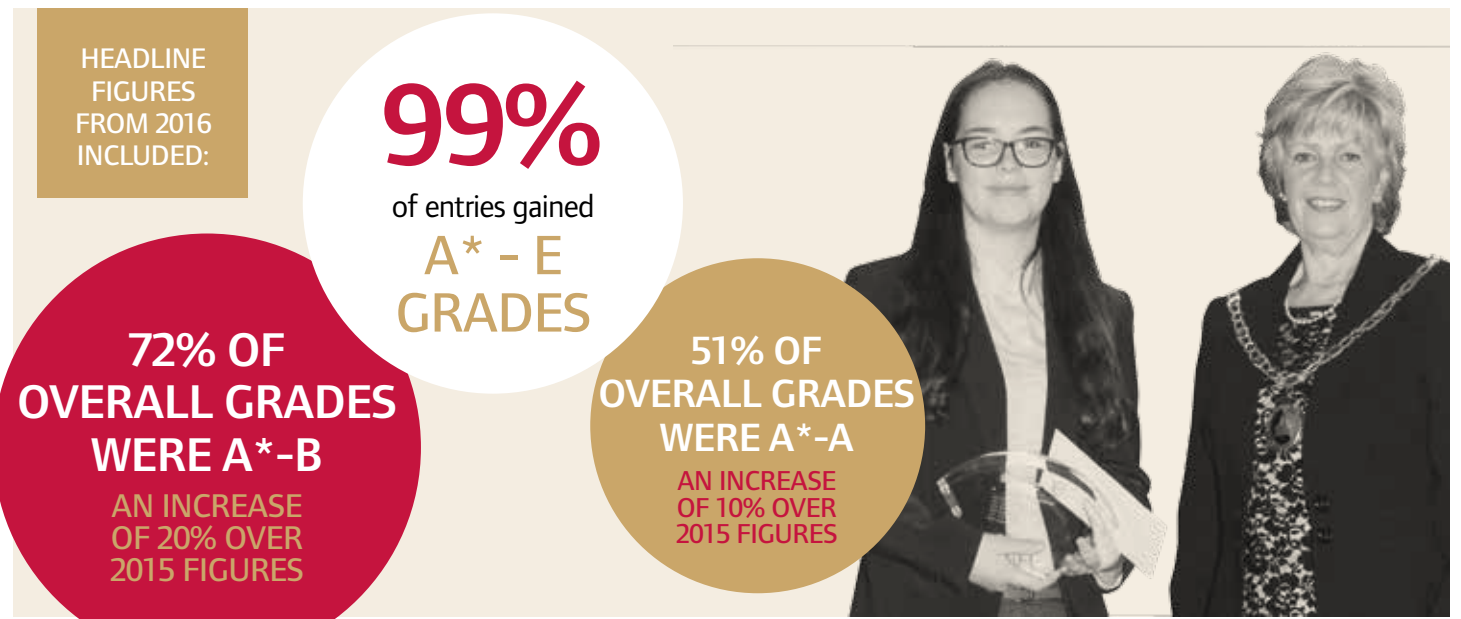
29- Your Future Beyond School



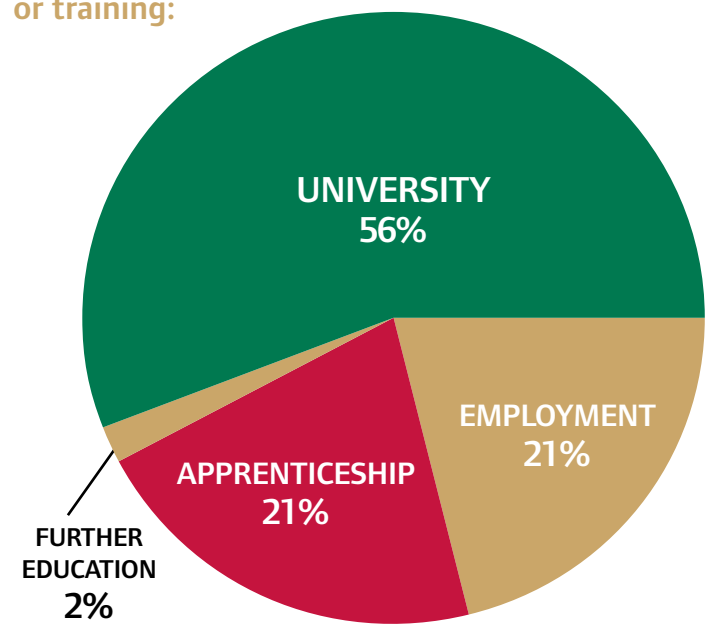
The Northumberland
Church of England
Academy
JOSEPHINE BUTLER CA

Welcome to JBVI at NCEA

JBVI is making rapid improvements in both its curriculum and, most importantly, in its results. In 2015 it was judged 'Good' by Ofsted and in 2016 its Year 13 results continued the upward trend of the previous 5 years and achieved its best set of results according to all government indicators.



In 2016 100% of our Year 13 students progressed into higher education, employment or training:



VOCATIONAL PROVISION
Judged as being in the top 10% of national providers for vocational courses for the second year in a row. The overall success of student achievement can also be measured through the average points score per student which rose from 778 in 2015 to 844 in 2016 meaning that our students had more UCAS points to use towards university entry than ever before.

Support and Guidance at JBVI

Students at JBVI receive strong support and guidance. All students join a tutor group with a tutor who takes a special interest in their welfare and progression.



We have a strong system of pastoral support to help students throughout their time with us.

The sixth form team are dedicated to supporting all students to achieve their full academic potential, providing help and support where necessary.

We have a strong system of reporting progress and parents are provided with intermediate academic reports every half term as well as full reports on a twice-yearly basis.

There is a careers advisor which works closely with the sixth form team to support all students in their progression into university, apprenticeships or their chosen careers.

THE APPLICATION PROCESS

To select the correct curriculum for you, you need to take into account your predicted Attainment 8 score. More information on this can be found on page 7.

You need to apply for either two double or four single or one double and two single courses.

OFSTED REPORTED THE FOLLOWING ON JBVI IN 2015:

Students are confident in the support

that would be offered by the staff should they face difficult academic or personal circumstances.

There is a strong focus on raising aspirations

OUR STUDENTS SAY:

Staff helped me complete my university application and influenced my decision on what to study.

I would recommend JBVI

You have regular meetings to look at how you are doing which allows you to discuss and plan your future

Extra-curricular opportunities at JBVI

“Students access a wide range of activities and enrichment opportunities” (Ofsted October 2015)

Although exam success and the gaining of excellent qualifications is the primary focus of all students and staff at JBVI, in a competitive world it is also imperative that our students gain additional experiences, interests and skills that will make them stand out from the crowd in future university or employment interviews.



From 2017 all Year 12 students will complete one week's work experience at a destination of their choosing. This work experience week will take place in March.

Our students have the opportunity to participate in numerous activities outside of lessons. In 2016, these opportunities have included;

- University Open Day visits;
- Sutton Trust summer schools;
- Wednesday guest speaker programme;
- Work experience placements;
- Careers fairs;
- Industry visits;
- Ethics conferences;
- Debates;
- Mock interviews;
- Annual theme park visits;
- Annual Edinburgh Christmas visit;
- Digital Day;
- Departmental enrichment;
- Social Mobility Foundation;
- Futures Programme;
- Psychology conference;
- Student leadership team;
- Charity committee;
- Career Ready Programme;
- Auschwitz project;
- Botswanan volunteering trip;
- South Korea school exchange.



JBVI students have taken part in adventures all over the globe; from Botswana to South Korea.

For which courses should I apply?

This is the most important decision that you have yet made in your education. Think and research carefully; find out more about the subjects by talking to the staff who teach them. Consider if your subject choices match your future ambitions, whether that be employment or university.

PHYSICS & MATHS PATHWAY

This is the most rigorous of all academic combinations. In order to progress to this pathway a student must have achieved a Attainment 8 score of above 60 including an A/ grade 7 in both maths and physics. Students on this pathway will choose one other subject alongside maths and physics and will also take the EPQ qualification.

ACADEMIC PATHWAY

In order to progress to this pathway a student must have achieved a Attainment 8 score of above 50. Students on this pathway will choose 3 A-level subjects and will also take the EPQ qualification.

(Please note that there may be an individual entry grade for academic subjects. See the subject information pages for details).

VOCATIONAL PATHWAY

In order to progress to this pathway a student must have achieved a Attainment 8 score of at least 36.4. Students in this pathway will choose 4 vocational options.

(Note: a double course counts as 2 options).

Our Sixth Form courses are split into **5 different pathways**

NOTE: ATTAINMENT 8

From 2016 the Government has changed the way that attainment is measured at KS4 from the previous 5 A*-C to a new Attainment 8 score.

The Attainment 8 score is based on an average of all GCSE scores achieved by the individual student. Consequently we are now using this measure as our entry criteria into sixth form study, although some individual subjects may still require the achievement of a particular GCSE grade in order to progress to A-level study.

MIXED ACADEMIC/VOCATIONAL PATHWAY

In order to progress to this pathway a student must have achieved a Attainment 8 score of at least 40. Students in this pathway will choose a mixture of academic and vocational subjects, with a maximum of 2 academic choices.

LEVEL 2 PATHWAY

Students with a Attainment 8 score of fewer than 36.4 will progress on to our Level 2 pathway. This is a one year option designed for students who wish to come back into JBVI but are not quite ready to progress on to Level 3 courses. It is designed as a preparatory year with the expectation that they will move on to the Level 3 vocational pathway for the next academic year.

If you are a sixth form student and have not passed GCSE English and/or maths with at least a grade 5 then it is now a mandatory requirement that you re-sit these qualifications.

These subjects are vital for entry into university or employment.

Study programmes are well informed by students' interests and career aspirations so that they are

well prepared for the next stage.

OFSTED, OCTOBER 2015

ACADEMIC PATHWAY

BLOCK 1	BLOCK 2	BLOCK 3	BLOCK 4
EPQ	EPQ	EPQ	EPQ
Maths	Biology	Physics	Chemistry
English Language	Geography	English Literature	History
Religious Studies	Psychology	Sociology	French
		Economics	Art & Design

LEVEL 3 VOCATIONAL PATHWAY

BLOCK 1	BLOCK 2	BLOCK 3	BLOCK 4
H&SC	H&SC	Childcare	Childcare
Sport	Sport	Science	ICT (S)
ICT	ICT	Construction	Construction
Food & Nutrition	Music	Business	Business
Performing Arts	Business (S)	Public Services	Public Services
		Media	

LEVEL 2 PATHWAY

Childcare	Teamwork & Personal Development	Maths/English	Hospitality	Work Experience
Business			Multimedia	

Bespoke Pathways

In addition to our main curriculum pathways we are offering two specific subject based pathways in Expressive Arts and the Combined Cadet Force. These are designed for students who have a strong interest in pursuing a career in either the Arts or a uniformed service. More information on each of these pathways can be found below.



EXPRESSIVE ARTS PATHWAY

Designed for students who want to develop their creative side, this pathway will allow students to progress to university or careers in the arts.

If students take this as a pathway, they will take BTEC Performing Arts (single); BTEC Music (single) and a choice of a further 2 subjects out of BTEC Media (single); A-Level Art & Design or an Extended Project Qualification (EPQ) which will allow them to develop an interest in an area of the arts of their choosing.

Alongside this curriculum offer will be a comprehensive range of enrichment activities to really develop skills and interest and provide a range of experience for further progression at the end of Y13. This enrichment will include some of the following: visiting artists; instrument tuition; Rock School qualifications; community music; military music; Massive Open On-line Courses; visits etc.

CHOICE 1	CHOICE 2	CHOICE 3	CHOICE 4
Performing Arts	BTEC Music	BTEC Media	A Level Art & Design
		EPQ	EPQ
Faculty Enrichment Programme			

NB – Students wishing to progress on to this pathway must have gained a Attainment 8 score of at least 40 with a C grade in GCSE Music and a Grade 5 in an instrument.

CCF PATHWAY

We also offer a pathway for students wishing to progress from JBVI into the uniformed services.

For those wishing to develop their education at JBVI with a view to joining the ranks of one of the armed forces we offer the following:

CHOICE 1	CHOICE 2	CHOICE 3	CHOICE 4
BTEC Sport	BTEC Sport	Public Services	Public Services / ILM
CCF Enrichment Programme			

In this pathway, students will be able to develop their awareness of the world of sport and fitness through a double qualification (two A-Level equivalents) in BTEC Sport alongside the Public Services qualification which introduces students to the world of the uniformed service. Students will take a double PS qualification alongside ILM (International Leadership and Management), a qualification well thought of in the uniformed services because it develops key leadership skills and awareness. Running alongside these qualifications will be a comprehensive faculty enrichment programme consisting of: Duke of Edinburgh Award; SQCF Piping and Drumming Awards; CVQO Team Work & Personal Development along with numerous trip opportunities.

NB – Students wishing to progress on to this pathway must have gained a A8 score of at least 36.4

LEADERSHIP PATHWAY

For those wishing to focus on preparing for a leadership role in one of the uniformed services, our Leadership Pathway provides qualifications in Public Services and ILM alongside the necessary additional 2 Level 3 qualifications and Duke of Edinburgh Gold Award required for entry into Officer Training School.

In order to progress on to this pathway you must have a A8 score of at least 40. The pathway is as follows:

CHOICE 1	CHOICE 2	CHOICE 3	CHOICE 4
Food & Nutrition	ILM	Public Services	Public Services
BTEC Performing Arts		BTEC Science	ICT
A Level Option from Block 1		BTEC Media	
Duke of Edinburgh Gold Award			

NB – In this pathway students are required to take a core offer of ILM and at least one Public Services option. In choice 1 the A-Level option is only open to those students who meet the individual subject entry criteria.

A Level Courses

ART & DESIGN

A Level Art and Design: Fine art (AQA)

Requires: Grade C in GCSE Art, Photography or 3D Design

Students will be introduced to a variety of experiences that explore a range of fine art media, processes and techniques. They will be made aware of both traditional and new media.

Students will explore the use of drawing for different purposes, using a variety of methods and media on a variety of scales. Students may use sketchbooks/workbooks/journals to underpin their work where appropriate. Students will explore relevant images, artefacts and resources relating to a range of art, craft and design, from the past and from recent times, including European and non-European examples. Student responses must be shown through practical and critical activities that demonstrate their understanding of different styles, genres and traditions.

Assessment Method

There are 2 components completed in Year 1 and 2 completed in Year 2.

60% coursework and **40%** external component set by AQA.

Career Progression

This specification is an appropriate foundation for further study of art and design or related subjects in higher education.

Many students go on to a foundation course at college which is a pathway into higher education. Other students have gone on directly to study architecture, textiles, fashion, advertising and interior design at university.

“This course has allowed me to study a very wide range of media and explore my own ideas, as a result I have created an amazing portfolio which has helped me get into university”.

Year 13 Student



BIOLOGY

A Level Biology (AQA)

Requires: Grade B in GCSE Biology or Core and Additional Science

This course consists of six core topics from: Biological Molecules; Cells; Organisms Exchange Substances with their Environment; Genetic Information; Variation and Relationships between Organisms; Energy transfers in and between Organisms; Organisms respond to changes in their internal and external environments; Genetics; Populations; Evolution and Ecosystems and the Control of Gene Expression.

The qualification is linear. Linear means that students will sit all of the A-level exams at the end of Year 13.

Assessment Method

A Level:

Paper 1 — **35%**

Paper 2 — **35%**

Paper 3 — **30%**

Career Progression

Biology is a great choice of subject for people who want a career in health and clinical professions, such as medicine, dentistry, veterinary science, physiotherapy, pharmacy, optometry, nursing, zoology, marine biology or forensic science. Biology is one of the most popular A level subjects in the country, many of these students enjoy the subject so much they eventually choose a biology related degree course. Others go on to careers in law, computing, accounting or teaching.

“An understanding of the natural world and what’s in it is a source of not only great curiosity but great fulfilment”.

David Attenborough

CHEMISTRY

A Level Chemistry (OCR)

Requires: Grade B in GCSE Chemistry or Core & Additional Science

This course consists of three core units from: Development of Practical Skills in Chemistry; Foundations in Chemistry; Periodic Table and Energy; Core Organic Chemistry; Physical Chemistry and Transition Elements and Organic Chemistry and Analysis.

The qualification is linear. Linear means that students will sit all of the A-level exams at the end of Year 13.

Assessment Method

A Level:

Paper 1 — **37%**

Paper 2 — **37%**

Paper 3 — **26%**

Career Progression

Chemistry can lead to excellent careers in medicine, dentistry, forensics, marine chemistry, drug discovery, chemical engineering, archaeology and product development of new food flavours and cosmetics. Chemistry equips you with skills such as logical thinking, analysis, creativity and communication. These skills are highly desirable in the areas of sales and marketing, law, publishing and business and finance. The average chemistry graduate earns substantially more over a lifetime than graduates of many other disciplines.

“Science is the acceptance of what works and the rejection of what does not. That needs more courage than we might think”.

Jacob Bronowski

ECONOMICS

A Level Economics B (Edexcel)

Requires: Grade 6 at GCSE Maths and GCSE English Language

Throughout this course we aim to debate economic issues such as inequality, globalisation and the global financial crisis. Exploring and presenting alternative courses of action, keeping up to date with national and international trends learning about the economic environment and business through research and investigation.

If this is what you like doing? Then this course is for you.

We aim to help you understand the economic climate of the world and challenge your views on issues such as poverty, finance and unemployment. We aim to study the use of ‘national well-being and national happiness’ and together we will see how these can be used to measure economic growth for the first time.

Assessment Method

This is via three papers all of which you will sit at the end of Year 13. Each paper comprises 100 marks and is 2 hours in duration.

Questions comprise short answer, data response and essay.

A-level paper three has a broad pre-released context to support the investigative nature of the qualification. Papers one and two count as 35% of your marks and paper three 30%.

This is a two year course and the topics taught are as follows:

Theme 1: Markets, Consumers and Firms

Theme 2: The Wider Economic Environment

Theme 3: The Global Economy

Theme 4: Making Markets Work

Career Progression

With its economics content this course will give you enhanced career choice and progression opportunities. Progression routes allow for you to study business management, law, economics and accountancy degrees at university. It also supports degrees in ICT, hospitality, travel, health and social care and sport. If wishing to enter the field of work the course also opens up a field of prestigious careers in management, politics, law and accountancy plus many more.

Economics students can follow a wide range of careers in industry, commerce, finance and the civil service. You might choose a career in banking, sales, product management or general management. Alongside this if hoping to start up your own business then you will gain a vast amount of knowledge on the wider economic environment and the sectors you could open up in.

“If you want a real insight into the way the world we live in works, economics is a great starting point”.

Year 12 Student

ENGLISH LANGUAGE

A Level English Language (AQA)

Requires: Grade 6 in GCSE English and English Literature

A-level English Language offers opportunities for students to develop their subject expertise by engaging creatively and critically with a wide range of texts and discourses over the two years.

Students will create texts and reflect critically on their own processes of production, while analysing the texts produced by others. The topics and titles of the subject include 'Language, the individual and society' focusing on individual and immediate social contexts for language, and 'Language diversity and change' working outwards to consider larger-scale public discourses about change and variety, drawing on regional, ethnic, national and global Englishes.

Assessment Method

A language investigation of student's own choice is carried out, alongside a creative critique as part of the non-exam assessed unit. There are then two 2hr 30 minute exams on Language, Diversity and the Individual, then Language variety and change.

Career Progression

This qualification can be used for a variety of career paths including teaching, journalism, proof-reading and speech and language therapy.

"The limits of my language, means the limits of my world".

Ludwig Wittgenstein

ENGLISH LITERATURE

A Level English Literature (AQA)

Requires: Grade 6 in GCSE English and English Literature

Literature students begin their study with two texts: one Shakespeare play and one Anthology of Love Poetry through the Ages (Pre –1900 or Post 1900). This is followed by the study of two prose texts and one unseen prose extract. In the second year of the course, students study 'Modern Times' - literature from 1945 to present day and complete an independent critical study based on the theme of texts across time.

Assessment Method

Study of three texts: one poetry and one prose text, of which one must be written pre-1900, one Shakespeare play and two unseen poems in a 3 hour exam;

Study of three texts: one prose, one poetry, and one drama, in a 2 hr 30 minute exam as well as a comparative critical study over the two years.

Career Progression

This qualification is highly regarded and related careers are diverse: from the legal profession to social work, theatre, journalism and teaching.

"Books are the carriers of civilization. Without books, history is silent, literature dumb, science crippled, thought and speculation at a standstill".

Barbara Tuchman

EPQ

Level 3 Extended Project Qualification (AQA)

The Extended Project Qualification (EPQ) allows students to extend their abilities beyond the A-level syllabus and prepare for university or their future career. It is worth half an A-level (28 UCAS points) so can be used to earn extra UCAS points. It is now recognised widely amongst universities as an accompaniment to the traditional choice of 3 subjects at A Level. It is graded from A*-U and is based on a topic chosen by the student which can be completed in a variety of formats from the more traditional essay style project, through to those who wish to produce an artefact, event, piece of art, exhibition - this list is endless!

Assessment Method

100% coursework which is internally and externally assessed.

Career Progression

The EPQ allows students to embark on largely self-directed projects. By taking responsibility for the choice and design of an individual project (or an individual role in a group project) students:

- become more critical, reflective and independent learners
- develop and apply decision-making and problem-solving skills
- increase their planning, research, analysis, synthesis, evaluation and presentation skills
- learn to apply new technologies confidently
- demonstrate creativity, initiative and enterprise.

All of these skills are widely recognised as transferable for both the completion of higher education and the world of work.

"Nearly 1 in 5 successful applicants to Durham had completed the EPQ".

The Sunday Times 16 Feb 2014

"Newcastle University values the skills of research and independent learning that the Extended Project is designed to develop and welcomes applications from students offering an Extended Project alongside other qualifications of an appropriate level".

(www.aqa.org.uk)

FRENCH

A Level French (AQA)

Requires: Grade B in GCSE French

Choosing an A-level language is a really smart move if you want a fascinating subject that offers you a range of career possibilities at the end and are a lot of fun along the way. A-level language courses are interesting and varied subjects to study and give you a broad range of knowledge and skills. Learning a language is a never-ending process; languages are constantly changing, bringing in new words and getting rid of old ones. The skills and qualifications that you gain from studying a language at A-level are incredibly important tools to have under your belt.

Languages are key to the exciting multinational world we live in!

Assessment Method

There are three separate papers that are taken in the summer term of Year 13.

- Paper 1 — listening, reading and translation paper - **40%**
- Paper 2 — writing paper based on film and literature - **30%**
- Paper 3 — oral exam involving reaction to stimulus and a presentation and follow-up discussion - **30%**

Career Progression

Languages are an invaluable skill to have. French is one of the four most widely spoken languages in the world and knowledge of the French language will allow you to travel and discover not only French speaking European countries, but Canada, African and Caribbean countries too where many wonderful, cultural experiences await in different countries.

Potential career paths include; travel industry jobs; teaching, interpreting and translating plus many more. Having a language can increase your salary from 8 - 20% and gives you a head start on other potential employees as by speaking another language you are vital to any company who does international business.

"If you talk to a man in a language he understands, that goes to his head. If you talk to him in his own language, that goes to his heart."

Nelson Mandela

GEOGRAPHY

A Level Geography (AQA)

Requires: Grade B in GCSE Geography or Grade 6 in English Language

Studying Geography gives students the opportunity to travel the world via the classroom, learning about both natural and social sciences along the way. We are constantly exposed to geographical issues in everyday life, including: environmental concerns; natural disasters; world weather; local developments; urban and rural change; population movements; maps and travel. Students can develop an awareness and understanding of the patterns, processes and relationships that characterise human and physical environments. Traditionally Geography is seen as a bridge between the arts and sciences, enabling students to keep their options open.

Assessment Method

There will be two exams taken at the end of Year 13.

Paper 1: Physical geography and people and the environment.
Paper 2: Human geography and fieldwork investigation.

Career Progression

Opportunities for geography graduates include:

- Cartographer
- Commercial/residential surveyor
- Environmental consultant
- Geographical information systems officer
- Planning and development surveyor
- Teacher
- Town planner

"Geography students hold the key to the world's problems".

Michael Palin

"It is inherently multidisciplinary in a world that increasingly values people who have the skills needed to work across the physical and social sciences".

(Guardian, 2015)

HISTORY

A Level History (Edexcel)

Requires: Grade B in GCSE History or Grade 6 in English Language

The aim of the course is to develop a wide range of historical skills by applying them across a large time period. Through a combination of lectures, small group seminar discussions and independent research, students develop skills that are vital for university or work. Learning also takes place outside of the classroom.

Students have had the opportunity take part in revision conferences in Manchester, hear guest speakers and lectures, visit Windsor Castle and Auschwitz as part of the Holocaust Educational trust.

Year 12: Religion and the State in Early Modern Europe

Paper 1: England 1509-1603: authority, nation and religion.

In this topic, we look at the Tudor monarchs from Henry VIII to Elizabeth I

Paper 2: Luther and the German reformation 1515-1555. In this topic we look at how Martin Luther rebelled against the Catholic Church.

Year 13: Modern World

Paper 3: Poverty, public health and the state in Britain 1780-1939.

In this topic we look at how life and conditions for the poor in British industrial towns changed over time.

Paper 4: Russia coursework. This unit will focus on researching an interpretation of the Russian Revolution 1917.

Assessment Method

All exams will take place at the end of Year 13.

Paper 1 – External examination - 2 hours 15 minutes

Paper 2 – External examination - 1 hour 45 minutes.

Paper 3 – External examination - 2 hours 15 minutes.

Paper 4 – Coursework - To be completed throughout Year 13.

Career Progression

By studying history, you can enter a variety of careers directly related to history such as heritage industry, teaching at school/college/university level, archaeology and archive work and non-directly related work such as classics, law, politics, the Civil Service, architecture, tourism, research and conservation.

“History cannot give us a programme for the future, but it can give us a fuller understanding, and of our common humanity, so we face a better future”.

Robert Penn Warren

MATHS

A level Mathematics (Edexcel)

Requires: Grade 6 in GCSE Maths

Grade 7/8 in GCSE Maths if studying Physics also.

A level Mathematics is an interesting and challenging course which extends the methods you learned at GCSE and includes applications of mathematics, such as Statistics and Mechanics

Statistics – Collecting and analysing data and using this to make predictions about future events. Many subjects make use of statistical information and techniques. An understanding of probability and risk is important in careers like insurance, medicine, engineering and the sciences.

Mechanics – Modelling and analysing the physical world around us, including the study of forces and motion. Mechanics is particularly useful to students studying physics and engineering.

New AS and A levels in Mathematics are being introduced.

There will be more emphasis on problem solving, reasoning and modelling, and a requirement for the use of technology.

Assessment Method

All examinations take place at the end of Year 13.

3 written papers each lasting 2 hours and worth 100 marks.

Paper 1 – Pure Maths 1

Paper 2 – Pure Maths 2

Paper 3 – Statistics and Mechanics

Career Progression

Mathematics A-level students and graduates are in high demand by employers. A qualification in maths will make you stand out from a crowd. Maths is the essential transferable component across all science, engineering, technology and maths subjects. The reason why so many employers highly value mathematics qualifications is mathematics students become better at thinking logically and analytically. Through solving problems you develop resilience and are able to think creatively and strategically. The writing of structured solutions, proof and justification of results help you to formulate reasoned arguments. And importantly you will have excellent numeracy skills and the ability to process and interpret data.

People with maths qualifications can go into accounting, medicine, engineering, forensic pathology, finance, business, consultancy, teaching, computing, games development, scientific research, programming, civil service, design, construction and astrophysics, to name but a few!

“Careers for men and women with good mathematics skills and qualifications are not only well paid, but they are also often interesting and rewarding. People who have studied mathematics are in the fortunate position of having an excellent choice of career”.

PHYSICS

A Level Physics (AQA)

Requires: Grade B in GCSE Physics

Grade A in GCSE Physics if studying A Level Maths also.

A-level Physics allows students to appreciate how fundamental Science works and to study optional topics that particularly interest them – including Astrophysics, Medical Physics and Applied Physics.

A-level Physics builds on the concepts and skills developed in the Physics GCSE.

The qualification is linear. Linear means that students will sit all of the A-level exams at the end of Year 13.

Assessment Method

A Level:

Paper 1 — **35%**

Paper 2 — **35%**

Paper 3 — **30%**

Career Progression

Physics is needed for most engineering, science or computer science courses at university. It is a very well respected qualification when applying for other types of course at university or college.

Physics teaches you to think logically, clearly and carefully. This is good in itself but it is also valued by employers.

“The greatest discoveries of science have always been those that forced us to rethink our beliefs about the universe and our place in it”.

Robert L. Park

PSYCHOLOGY

A Level Psychology (AQA)

Requires: Grade 6 in GCSE Maths and English Language

Psychology is the study of the human mind and behaviour. Some of the everyday phenomena which psychology has attempted to explain range from; how crowds act at a football match, why some people conform in a social situation and what causes psychological disorders such as depression and anorexia. The broad range of topics studied at A-level psychology means that there is something interesting for everyone to study, whether you are studying sciences, humanities or languages.

There are 3 papers in total with the following content;

Paper 1: Social Influence, Memory, Attachment and Psychopathology

Paper 2: Approaches in Psychology, Biopsychology and Research Methods.

Paper 3: Issues and Debates in Psychology, Gender, Schizophrenia and Forensic Psychology.

Assessment Method

Assessment will be 100% through examinations in Year 13. Three exams each worth **33.3%** of the final A-level grade.

Career Progression

A-level Psychology provides good preparation for higher education and is accepted by all universities as a full A-level. It is recognised as a science by universities and is a popular fourth subject alongside science and maths for those students wishing to study medicine or veterinary science. It can also be taken as a subject which is complimentary to English, Geography, Sociology and other humanities subjects as it requires a high level of extended writing.

Psychology A-level is useful for a wide range of careers including; teaching, care work, social work, the police force, business and human resources and youth work. Psychology is also useful for careers linked to science such as biomedicine, forensic science, pathology and criminology.

“I think it’s the only subject that gives you a deeper understanding of human behaviour and encourages critical thinking”.

Year 13 Student

RELIGIOUS STUDIES

A Level Religious Studies (AQA)

Requires: Grade B in GCSE RE or Grade 6 in GCSE English Language

There are two assessed components. Students must take assessments in both Section A and Section B in the same exam series.

Section A: Philosophy of Religion

Arguments for the existence of God
Evil and suffering
Religious experience

Section B: Ethics and religion.

Ethical theories
Issues of human life and death
Issues of animal life and death

In section B, study of religion, students will pick **ONE** faith option from the list below;

2A Buddhism
2B Christianity
2C Hinduism
2D Islam
2E Judaism

For each faith option (2A–2E) the following content is covered:

Sources of wisdom and authority
God/gods/ultimate reality
Life after death
Key moral principles
Religious identity

Assessment Method

Written exam: 2 hours – 120 marks
Section A: Philosophy of religion – 60 marks
Section B: Ethics – 60 marks.

Career Progression

Studying Religious Studies can lead to a range of university subject such as Philosophy, English, History, Theology and Sciences. Other students use it to study law. RS students are equally skilled in a whole range of literacy criticism and historical analysis.

“The study of ethics has helped me think about what is right and wrong and why we do the things we do. It amazed me that there is more to life than just simple yes and no decisions”.

Year 13 Student

SOCIOLOGY

A Level Sociology (AQA)

Requires: Grade 6 in GCSE English Language

A-level Sociology will help you to make sense of the society we live in and understand the cultural and identity issues which affect us all.

You will learn a number of skills including the use of evidence to support your arguments, how to investigate facts, and critical thinking. It is relevant to the society you live in so you are bound to enjoy learning about topics that are relevant to everyday life; plus it opens the door to a fantastic range of interesting careers.

During the course we study the following modules:

Families

Why has family structure changed?
Why do children seem to have more power in the household?

Education

Why do some students achieve more than others?
What factors both within schools and in wider society influence achievement?

Media

What role does the media play in shaping our society?
Can we trust everything we see?

Crime and Deviance

Which members of society commit the most crime?
What causes people to commit crime?

Research methods and theory

Assessment Method

100% examination, 3 papers taken at the end of Year 13

Career Progression

Studying sociology at university can give you a whole host of exciting career options, including:

- Social work
- Human resources
- Advertising
- Policing
- Marketing
- Journalism
- Law
- Teaching.

“My students often ask me, ‘What is sociology?’ And I tell them, ‘It’s the study of the way in which human beings are shaped by things that they don’t see.’”

Sam Richards

Level 3 Vocational

BUSINESS (SINGLE)

BTEC Level 3 National Extended Certificate in Business
Pearson 601/7159/5 (1 A-level)

Business opens up new doors into real-life situations. Not only does it prepare you for working life but it also gives you the tools to manage your personal finances. Employers have approved this qualification and have been involved in the process to ensure that if you study this course you will be gaining the skills and knowledge they look for when employing someone. The course is for students who are interested in learning about the business sector alongside other fields of study, with a view to progressing on to a wide range of higher education courses, not necessarily in business related subjects.

The topics taught are as follows:

- Exploring business
- Developing a Marketing Campaign
- Personal and Business Finance
- Recruitment and Selection Process

Assessment Method

There are two coursework units and two external assessment units, one of which is a written task set by the exam board.

This means that you are assessed **42%** through coursework and **58%** through external assessment.

Career Progression

Progression routes lead students into studying business studies or a similar degree programme at university. Career possibilities include; human resources, business management, marketing and promotion, accountancy and careers in the financial sector. There are also many opportunities for involvement in practical and organisational activities e.g. managing events.

“I chose business as I thought that it would be a great opportunity to learn about different business types and learn how they operate. Also I thought it would be good to find out what makes a business successful or not. I am looking to set up my own business in the future so this will help me”.

Year 12 Student

BUSINESS (DOUBLE)

BTEC Level 3 National Diploma in Business
Pearson 601/7157/1 (2 A-levels)

Business opens up new doors into real-life situations. Not only does it prepare you for working life but it also gives you the tools to manage your personal finances. Employers have approved this qualification and have been involved in the process to ensure that if you study this course you will be gaining the skills and knowledge they look for when employing someone. The course is for students who are interested in learning about the business sector alongside other fields of study, with a view to progressing on to a wide range of higher education courses, not necessarily in business related subjects.

The topics taught are as follows:

- Exploring business
- Developing a Marketing Campaign
- Personal and Business Finance
- Recruitment and Selection Process
- Managing an event
- International Business
- Principles of Management
- Investigating Customer Service

Assessment Method

There are five coursework units and three external assessment units, two of which are written tasks set by the exam board.

This means that you are assessed **55%** through coursework and **45%** through external assessment.

Career Progression

Progression routes lead students into studying business studies or a similar degree programme at university. Career possibilities include; human resources, business management, marketing and promotion, accountancy and careers in the financial sector. There are also many opportunities for involvement in practical and organisational activities e.g. managing events.

“Business is a great option to take because it doesn’t just give you information about the business world, but you also learn valuable life skills you could use in the future. For example help with managing your personal finances, understanding the best bank accounts and car loans to get”.

Year 12 Student

CHILDCARE (DOUBLE)

BTEC Level 3 Diploma in Children's Play, Learning and Development
Edexcel 601/7570/9 (1.5 A Levels)

This qualification has been developed in consultation with employers and professionals to ensure that the topics are appropriate for students interested in working in the Childcare sector. Students will learn about the development of children and get to engage with early years' service users. There will be a big focus on how children learn through play which will involve students on the course participating in practical activities. Keeping children safe and supporting their learning and wellbeing will also be of utmost importance.

Assessment Method

Mandatory coursework content – 66%
External assessment – 44%

Career Progression

This BTEC qualification prepares students for both university and employment. The career paths linked to Childcare are extensive and include: Child minding, Early Years Educator, Nanny, Nursery Nurse, Play worker.

"I chose this course as I really want to work with children when I leave 6th Form. I'm not sure what I want to do yet but I know this course will help me decide and there's lots of practical stuff involved which is great!"

Year 12 Student



CONSTRUCTION (DOUBLE)

BTEC Level 3 in Construction and the Built Environment
Pearson (500/7137/3) (2 A Levels)

Note – this specification is subject to change

The first year of the course consists of the following seven units; relating to the built environment

- health and safety
- sustainability
- science and materials
- construction technology and design
- building technology
- graphical detailing and surveying.

In the second year of the course, you will complete an additional six units relating to the sector.

Work is not all classroom based and offers a variety of work related practical activities.

Assessment Method

Students will be assessed through a combination of external examinations and coursework.

Career Progression

This qualification can provide you with UCAS points towards university entry. Typically this will allow entry onto an HNC/HND, a foundation degree or a full honours degree course. The course also offers an opportunity for students to enter employment within the sector in a technical role. Related careers are: civil or structural engineering; construction or project management; surveying; architecture; quantity surveying or within health and safety (CDM co-ordinator).

"It is not the beauty of a building you should look at; it's the construction of the foundation that will stand the test of time".

David Allan Coe

HEALTH & SOCIAL CARE (DOUBLE)

BTEC L3 Diploma in Health and Social Care
Edexcel 500/9465/8 (2 A Levels)

This course encompasses a wide range of issues and topics linked to Health and Social Care. Students get the chance to explore areas of the subject they did not realise existed such as Nutrition, Health Promotion and Public Health. The course is designed to be adaptable to the requirements of the vocational sector as well as the students own interests and aspirations. We try to include as many practical elements as possible over the duration of the course. Students will not only complete their coursework but will get the opportunity to gain their First Aid Certificate and complete an extensive period of work experience interacting with a range of service users in different care settings. Guest speakers also feature during lessons so that students can see how their knowledge can be applied and built upon in a 'real world' context.

Assessment Method

Coursework assessment – 54%
External assessment – 46%.

Career Progression

This BTEC qualification prepares students for both university and employment. The range of careers linked to Health and Social Care are extensive and include: Counselling, Physiotherapy, Nursing, Ambulance Technician, Social work and many more.

"This is a great course with loads of different and interesting units to study. I had no idea about the huge range of careers that were linked to Health and Social Care".

Year 12 Student

CREATIVE MEDIA (SINGLE)

BTEC Level 3 Extended Certificate in Creative Digital Media Production
Edexcel 601/7467/5 (1 A Level)

The content of the qualification relates directly to the skills and understanding needed for further study in creative digital media production and has been developed in consultation with higher education providers. Over three units of mandatory content, students gain a broad understanding of the subject and learn the skills to produce media artefacts. They develop their ability to analyse and deconstruct media images and representations. They learn the communication and planning skills needed to work in teams through vocational media projects. An optional introductory unit in film allows students to create engaging digital media content and platforms.

Assessment Method

2 Internally set and assessed Assignments – 50%
1 externally set Exam – 25%
1 Externally set Task – 25%

Career Progression

The qualification is intended to carry UCAS points and is recognised by Higher Education providers as contributing to meeting admission requirements for many courses including Media Studies, Journalism, film & TV, Animation and other creative sectors

"Pick up a camera. Shoot something. No matter how small, no matter how cheesy, no matter whether your friends and your sister star in it. Put your name on it as director.

Now you're a director..."

James Cameron

FOOD SCIENCE & NUTRITION (SINGLE)

WJEC Level 3 Diploma in Food Science and Nutrition
WJEC 601/4552/3 (1 A Level)

An understanding of food science and nutrition is relevant to many industries and job roles. Care providers and nutritionists in hospitals use this knowledge, as do sports coaches and fitness instructors. Hotels and restaurants, food manufacturers and government agencies also use this understanding to develop menus, food products and policies that support healthy eating initiatives. Many employment opportunities within the field of food science and nutrition are available to graduates.

Assessment Method

- 2 Internally set assessments
- 1 Externally set exam
- 1 Externally set task

Career Progression

Together with other relevant qualifications at Level 3, students will gain the required knowledge to be able to use the qualification to support entry to higher education courses such as:

- BSc Food and Nutrition
- BSc Human Nutrition
- BSc (Hons) Public Health Nutrition
- BSc (Hons) Food Science and Technology

“I chose to study Food Science & Nutrition as I had enjoyed the content of the Food Technology course in Yr11.

This course opens up a lot of career possibilities for me in the future. Much of the information in the unit I am currently studying links directly to topics I have covered in my A Level Biology course. I have learnt new cooking skills and I am currently analysing client diets and assessing nutritional health”.

Year 12 Student

ICT (SINGLE)

Level 3 Cambridge Technical Introductory Diploma in IT
OCR 5840 (1 A Level)

Cambridge Technical in IT will help you to achieve your potential and progress to the next stage of your lives, whether it is higher education, an apprenticeship, or employment.

This course has been designed to be refreshing with exciting content that is up to date, engaging, fit for purpose and suitable for the needs of young people. To do this, the course was designed with universities, employers and industry specialists to make sure you will gain the right combination of knowledge, understanding and skills required for the 21st century.

A wide range of centre-assessed units with practical and wider project-based assessment opportunities, as well as examined units on the Fundamentals of IT, Global Information, and Cyber Security, has resulted in focused qualifications. The Diploma has four vocational pathways within it; at least one pathway must be followed:

1. IT Infrastructure Technician
2. Emerging Digital Technology Practitioner
3. Application Developer
4. Data Analyst

Assessment Method

Three externally examined units and a choice of two centre-assessed units that OCR moderate.

Career Progression

Level 3 Cambridge Technical provides a strong base for progression to university, apprenticeships or work and are recognised for UCAS tariff points. This qualification also supports pathways onto non-ICT related courses including; business, engineering, financial and resource management, science and medicine.

“Out of all my subjects, ICT is the easiest in which to track my progress”.

Year 13 Student

ICT (DOUBLE)

Level 3 Cambridge Technical Diploma in IT
OCR 5842 (2 A Levels)

Cambridge Technical in IT will help you to achieve your potential and progress to the next stage of your lives, whether it be higher education, an apprenticeship, or employment.

This course has been designed to be refreshing with exciting content that is up to date, engaging, fit for purpose and suitable for the needs of young people. To do this, the course was designed with universities, employers and industry specialists to make sure you will gain the right combination of knowledge, understanding and skills required for the 21st century.

A wide range of centre-assessed units with practical and wider project-based assessment opportunities, as well as examined units on the Fundamentals of IT, Global Information, and Cyber Security, has resulted in focused qualifications. The Diploma has four vocational pathways within it; at least one pathway must be followed:

1. IT Infrastructure Technician
2. Emerging Digital Technology Practitioner
3. Application Developer
4. Data Analyst

Assessment Method

At least three externally examined units and a choice of eight further units, centre-assessed and moderated by OCR, which will make up a specialist endorsed pathway.

Career Progression

Level 3 Cambridge Technical provide a strong base for progression to university, apprenticeships or work and are recognised for UCAS tariff points. This qualification also supports pathways onto non-ICT related courses including; business, engineering, financial and resource management, science and medicine.

“I have had the chance to try out lots of new software that I had never used before”.

Year 13 Student

“I am gaining loads of UCAS points from this course”.

MUSIC (SINGLE)

Level 3 BTEC Extended Certificate in Music
Edexcel (1 A Level)

This course is designed to offer some flexibility and personalisation of the course alongside mandatory units, all of which combine to provide a qualification that is widely recognised by universities and employers. Students will study mandatory units including; Ensemble Music Performance techniques, Practical Music Theory and Harmony, and Professional Practice in the Music Industry. One further unit is studied, selected from a range of options including Arranging Music, Composing Music, Solo Performance, Music Investigation, amongst others.

Students will develop their practical skills and musical understanding through a range of practical opportunities, each with a ‘real-life’ vocational context as well as learning about the wider music industry.

Further to this, students will continue to develop a range of transferable skills that are highly regarded by Higher Education and employers.

Assessment Method

Mandatory Units

- 1 - Task: set and marked by exam board.
- 2 - Assignment: set and marked internally
- 3 - Task: set and marked by exam board

Optional Unit

Assignment: set and marked internally

Career Progression

Beyond KS5 you may progress to study at degree level. Options include; Music, Music Promotion, Sound Engineering, Music Journalism and Music for Film Television and Games plus many more.

Careers within the music industry include performer, music therapist, music teacher, sound technician, arts administration and many more.

“Music expresses that which cannot be said and on which it is impossible to be silent”.

Victor Hugo

SCIENCE (SINGLE)

Level 3 Cambridge Technical Extended Certificate in Laboratory Skills OCR (1 A Level)

Students will develop professional and practical skills through carrying out real experiments and research, working with local employers, allowing them to practice lab techniques required in an industrial setting as well as theoretical knowledge. Students will be made aware of safe working practices in a lab and the strict legal requirements they must adhere to. Students will also gain an understanding of the different types of scientific industries and settings plus how laboratory design can vary across organisations and sectors.

Every student will study five mandatory units which focus on the laboratory techniques and scientific principles:

- Science Fundamentals
- Laboratory Techniques
- Control of Hazards in the Laboratory
- Product Testing Techniques
- Microbiology

Assessment Method

Two external examinations in:-

- Science Fundamentals
- Laboratory Techniques

Three internally assessed units:-

- Control of Hazards in the Laboratory
- Product Testing Techniques
- Microbiology

Career Progression

This qualification allows students to apply their skills, knowledge and understanding to tasks or activities that are relevant to how human sciences, environmental sciences and food science are used in the workplace. Having an appreciation of how these are used in work will also help to prepare students for continuing education in this sector.

“The scientist is not a person who gives the right answers, he’s one who asks the right questions”.

Claude Levi-Strauss

PERFORMING ARTS (SINGLE)

Level 3 BTEC Extended Certificate in Performing Arts Edexcel (1 A Level)

This course is designed to offer some flexibility and personalisation of the course alongside mandatory units, all of which combine to provide a qualification that is widely recognised by universities and employers. Students study mandatory units including; Investigating Practitioner’s Work, Developing Skills and Techniques for Live Performance, and Group Performance Workshop. One further unit is studied, selected from a range of options including Writing For Performance, Acting Styles, Improvisation, Variety Performance and others.

Students will develop their practical skills and musical understanding through a range of practical opportunities, each with a ‘real-life’ vocational context as well as learning about the wider Performing Arts industry.

Further to this, students will continue to develop a range of transferable skills that are highly regarded by HE and employers.

Assessment Method

Mandatory Units

- 1 - Task: (Investigating Practitioner’s Work) set and marked by exam board.
- 2 - Assignment: (Developing Skills and Techniques for Live Performance) set and marked internally
- 3 - Task: (Group Performance Workshop) set and marked by exam board

Optional Unit

Assignment: set and marked internally

Career Progression

Beyond KS5 you can study at Degree level, any Performing Arts / Acting / Dance related subjects - and there are many varied courses at Further and Higher Education institutions.

Careers within the Performing Arts industry include performer, actor, community arts worker, dancer, drama therapist, theatre director plus many more.

“I regard the theatre as the greatest of all arts forms, the most immediate way in which a human being can share with another the sense of what it is to be a human being”.

Oscar Wilde

SPORT (DOUBLE)

BTEC Level 3 National Diploma in Fitness Services Edexcel 601/7215/0 (2 A levels)

The BTEC sport course is based around the theory of sport and science. Students will study various units over two years some examples of the units to be covered include; Anatomy and Physiology, Fitness Testing and Programming, Professional Development in the Sports Industry, Sports Leadership and Sports Injury Management.

The course is mainly classroom based but we try to carry out practical sport to enhance the student’s experience. We have links with Newcastle Eagles, Newcastle United, Newcastle Falcons, local universities and other local sporting clubs. These partnerships are used over the two years to help deliver a realistic experience for our students.

Assessment Method

10 units over two years.

2 units are externally assessed through examinations.

8 coursework units are internally assessed.

Career Progression

On successful completion of the qualification, direct entry will be permitted for students to go into the industry in roles such as:

- fitness instructor
- gym instructor
- circuits instructor
- exercise to music instructor
- aqua aerobics instructor plus many more.

It will also enable students to progress to a range of degree programmes related to the sport and fitness sector.

“PE and Sport are great subjects. We learn about the theory of sport and apply our practical knowledge. The teachers get all students to do their best and we set personal targets for our learning. The courses are challenging but we are in a supportive environment. I like the questioning and feedback to extend our understanding. I really enjoyed going to Newcastle Falcons and learning about sports massage”.

Year 13 Student

UNIFORMED SERVICES (DOUBLE)

BTEC Level 3 Diploma in Public Uniform Services Edexcel (2 A levels)

Requires: Membership of the CCF or an alternative cadets such as ACF, SCC, ATC, St John’s, Police or Fire Cadets.

Qualifications in Public Services are targeted at students who would like to gain employment in the public services sector and have been developed to provide further training, education and progression opportunities within this sector. The qualifications will develop students’ abilities through the knowledge and skills gained in the programme and are suitable for students’ who would like to know more about employment in uniformed or non-uniformed public services.

The BTEC is linked to the Academy’s CCF which will enable students to experience a far greater breadth of activity that is sponsored by the MOD which would include visits to paired units, training on and firing the issue assault rifle, unrivalled leadership opportunities and travel experience that could take the student across the UK or abroad.

The course is also linked to Duke of Edinburgh and a number of awards that can take place in enrichment time including; BTEC Level 2 Performance Music or SQA level 2 to 7 in Piping and drumming and Navigation Award Bronze, Silver and Gold.

Assessment Method

A combination of mandatory and optional units. Some units are assessed through coursework and others through external examinations.

Career Progression

The qualification allows students to progress onto further education related to uniformed services as well as straight into paid employment in the sector.

“In the last year I’ve performed in a military pipe band on behalf of our government in Macedonia, travelled to London more times than I’ve been to Newcastle, conducted live firing shoots and taken part in individual fire and manoeuvre, pairs, fire team and section attacks, command tasks, competitions against other schools including competing at the National First Aid Competitions. I am now the senior cadets and my responsibilities now include planning and even instructing which we were taught how to do. I’ve recently performed with the band using my guitar at one of the most prestigious events that we could play at and I’m hoping next year to play in the Edinburgh tattoo. I’ve done all this and the best thing is I get a qualification at the end, what are you waiting for? Come and join us”.

Year 12 Student

Level 2 Courses

CHILDCARE

*Level 2 First Award in Children's Play, Learning and Development
Edexcel 600/6814/0*

BTEC First in Children's Play, Learning and Development will inspire and enthuse students to consider a career in early years, or related sectors, where knowledge of child development is relevant. It will give students the opportunity to gain a broad knowledge and understanding of, and develop skills in, the early years sector, for example, of child development and using play to promote child development.

Assessment Method

3 core units consisting of an exam and 2 coursework portfolios.

Career Progression

This course supports progression to a more specialised level 3 vocational or academic course, such as in early years, health and social care or psychology, or an apprenticeship.

"Childcare is a really interesting course, I love going out on placement and look forward to seeing the children each week. I feel much more confident now!"

Savanna Hanson

HOSPITALITY

*BTEC Level 2 First Award in Hospitality
Edexcel 600/7044/4*

BTEC First in Hospitality will inspire and enthuse students to consider a career in the hospitality industry, rather than just being a customer or patron. The course will provide students with the opportunity to gain a broad understanding and knowledge of, and skills in, the hospitality industry. It will give students the potential to enter employment within a wide range of junior job roles across the hospitality industry, for example waiter/waitress, assistant front-of-house staff, temporary events/match day hospitality staff, concessions catering assistants, fast food servers.

Assessment Method

3 core units consisting of an exam and 2 coursework units.

Career Progression

This course will support progression to a more specialised level 3 vocational or academic hospitality and catering course or an apprenticeship in hospitality and catering.

"The art of cooking - it's when you mix craftsmanship at the highest level with creativity".

Eric Ripert (Chef/Co-owner Le Bernardin)

BUSINESS

*Pearson BTEC Level 2 First Award in Business
Pearson 600/4786/0*

The Pearson BTEC Level 2 First Award in Business has been designed to provide an engaging and stimulating introduction to the world of business. The qualification provides a good introduction to business. The core units cover the essential knowledge and skills required in the business sector. The optional specialist units, cover branding and promotion, customer service, sales, retail business, recruitment and career development, and business support. In addition to this, the qualification provides opportunities for students to develop the communication skills needed for working in the business sector, as you progress through the course.

Assessment Method

4 units consisting of one exam and three coursework units.

Career Progression

This course could provide a route into employment in many of the diverse areas of business, including roles in specialist areas such as marketing, finance, customer service or human resources, or a more generic role in an area such as business administration.

It also supports progression onto a level 3 business course or an apprenticeship.

"I think you should pick Business because it teaches you about the Economy and it gives you an in-depth view of how businesses work. It will help you if you want to go on and run your own business and will prepare you for working life. It is a really fun course with lots of opportunities to fundraise and visit businesses and the teachers are really enthusiastic.

Business is useful because it teaches you about personal finance that will help you in the future".

Year 12 Student

ICT

*Cambridge Technical Certificate in IT
OCR 05883 / 603/0371/2*

This qualification is for students of 16 years old or over who want to study IT. The qualification allows them to study IT in a context that enables them to learn and be assessed in ways that are practical and relevant to the IT sector. It will provide them with the skills, knowledge and understanding to progress onto employment, either directly or through an Apprenticeship (i.e. IT Users, Software, Web and Telecoms Professionals) or a Level 3 Tech Level qualification in the IT and computing sector.

Assessment Method

4 units consisting of 3 mandatory units and the remaining 1 unit from optional units. Two of these units will be examined.

Career Progression

The qualification will enable learners to acquire a range of transferable skills and knowledge which are highly regarded by employers. This qualification will lead to specific job roles which include: Digital Administrator, Digital Marketing Assistant and Junior Business Analyst.

This qualification is also a good route to support progression onto a Level 3 qualification in ICT.



PERSONAL DEVELOPMENT

*Pearson BTEC Level 2 Extended Certificate in Teamwork and Personal Development in the Community
Pearson 601/4184/0*

The qualification has been designed for students who are looking to work in the community, either in a voluntary capacity or through employment. It has been designed to give students the opportunity to:

- develop knowledge related to the voluntary sector
- develop skills that are valuable for those working in the community, many of which are the skills valued by employers
- develop own personal growth and engagement in learning.

Units to be studied may include; Teamwork and Communication Skills, Employment Skills in Uniformed Organisations, Career Planning and Self-Assessment for Uniformed Organisations, Improving Health and Fitness in Uniformed Organisations, Personal Development through Adventurous Activities, Land Navigation by Map and Compass, Expedition Skills, Volunteering, Citizenship, the Individual and Society or Community and Cultural Awareness.

Assessment Method

One mandatory unit in teamwork and communication skills followed by 2-3 optional units.

Assignment based assessment.

Career Progression

This qualification will equip students with the skills and knowledge recognised as important by society and employers while learning in a volunteering context. It will support their development and preparation for progression into employment in the future, either directly or after further education.

Having completed the Level 2 course students could progress to Level 3 qualifications or to entry level employment in various sectors. Students may also explore opportunities for entry to uniformed services.

Important information about Sixth Form study



Sixth Form study is different to GCSE study. All sixth form students are expected to partake in much more independent study than previously required at KS4.

Workloads are also higher both at school and at home. As a consequence, study skills such as time management and organisation become increasingly important in order for students to keep on top of their workload. This section of the JBVI option booklet is designed to give parents and students some important information and advice on what successful study at JBVI entails.

INDEPENDENT STUDY CAN CONSIST OF:

- Re-reading and re-writing class notes;
- Using notes to make mind maps or flash cards;
- Organising files;
- Carrying out additional reading or research;
- Homework set by class teacher;
- Attempting past paper questions (accessible through all exam board websites);
- Researching for assignment work;
- Writing assignments;
- Making suggested corrections to assignment work;
- Revising for examined modules.

ACADEMIC COURSES

Exam board guidelines say that students taking A-level subjects should be carrying out at least 3 hours independent study per subject per week.

VOCATIONAL COURSES

These courses are assessed largely on completion of coursework assignments rather than examinations, although most courses now have an examination module which has to be passed in order to pass the overall qualification.

There is not a recommendation of how long a student should carry out independent study per week as there is with academic courses, but those students who carry out more regular and effective study practices are generally those who achieve the higher vocational grades of D/D*.

IMPORTANT NOTE:

BTEC rules are now very strict about the meeting of coursework deadlines. If you do not meet a deadline you may fail the course.

HOW CAN I HELP MY CHILD REACH THEIR TARGET GRADE?

Target grades are set within the first couple of weeks of students starting at JBVI. They are set using an average of each individual students GCSE performance. Sixth Form performance is then monitored half termly by comparing performance predicted by teaching staff against these target grades.

TO SUPPORT STUDENTS IN REACHING THESE TARGET GRADES, PARENTS/CARERS CAN:

- Regularly discuss the targets with the students and keep them focussed on them;
- Discuss any improvement targets sent home via the JBVI monitoring process and help to focus towards them;
- Ensure home study is regular and effective;
- Emphasise the importance of using school study periods effectively;
- Ensure effective home study for (PPE) pre-public exams (see important dates below);
- Attend both PPE results evening sessions (see important dates below);
- Help promote the importance of using study periods for independent study;
- Ensure attendance at any departmental study sessions;
- Ensure overall good school attendance and punctuality.

SOME IMPORTANT CALENDAR DATES FOR YEAR 12 (SPECIFIC DATES TBC):

SEPTEMBER	Tutor Time - Subject Study Skills Programme
	Deadline for course changes (end of the month)
	Initial report card given to parents at 'Meet and Greet' evening
NOVEMBER	Maths / English retake period
JANUARY	BTEC Examination Period
	Subject Report 1 sent home
FEBRUARY	Pre-public exam week 1
MARCH	Work experience week
	PPE results and parents' evening
MAY	Subject Report 2 sent home
JUNE	Pre-public exam week 2
	Maths / English retake period
JULY	PPE re-sit week
AUGUST	PPE re-sit results day

Your future beyond school



WHAT DO EMPLOYERS SAY ABOUT YOUNG PEOPLE AND JOBS?

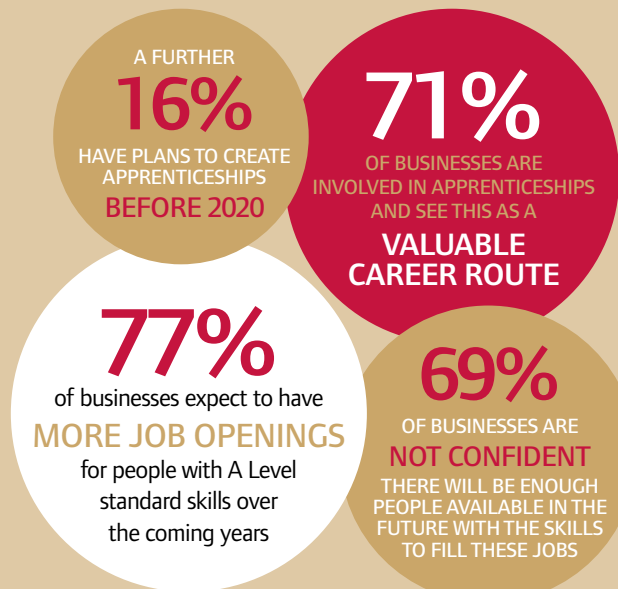
The three most important factors employers weigh up when recruiting school and college leavers are:

1. Attitude to work (89% of employers)
2. Aptitude for work (66% of employers)
3. Formal qualifications (23% of employers)

This does not mean qualifications are not important, just that everybody has them so you need to offer something else to employers.

Other 'essential capabilities' employers want young people to have are business and customer awareness, literacy and use of English, basic numeracy and teamwork.

(CBI/Pearson 2016: 500 organisations surveyed)



HOW CAN I START PREPARING FOR THE WORLD OF WORK?

- Consider how you can use curriculum and even holiday time to improve your employability skills e.g. through voluntary work, hobbies or a work experience placement.
- Check out a range of career videos at www.icould.com to see careers come to life. Also have a look at www.bestcourse4me.com; have you given careful consideration to university?
- Visit the Careers Corner in the library to look at careers books, university prospectuses and information about apprenticeships.

If you need some inspiration why not visit the National Career Service or Plotr websites?

How does this affect me?

The world of work is changing rapidly with more part time jobs, short term contracts and people changing jobs far more often. This means people need 'career management skills' to ensure they make the right decisions along the way.

You must consider your options carefully at the end of Year 11 and follow the learning route that is right for you (not your friends!). You also need to think beyond your qualifications: how can you use your evenings, weekends and holiday time to develop the skills and experience that today's employers want from you?

Where can I find support to plan my future?

In addition to your teachers, tutors and head of year you are also able to see the Academy's Careers Adviser whenever you want to discuss your potential career path. Appointments are normally booked on a voluntary basis so you decide when you need a meeting. Parents and carers are welcome to attend and appointments can be booked after 3.30pm if this is more convenient.



Thomas Bewick Campus
Moorhouse Lane,
Ashington, NE63 9LP

Tel: 01670 812 075

Grace Darling Campus
Central Parkway,
Newbiggin by the Sea,
NE64 6RT

Tel: 01670 812 075

James Knott Campus
Norham Road,
Ashington, NE63 0LF

Tel: 01670 813 219

William Leech Campus
Church Square,
Lynemouth,
Morpeth, NE61 5TR

Tel: 01670 860 267

Josephine Butler Campus
Academy Road,
Ashington, NE63 9FZ

Tel: 01670 816 111