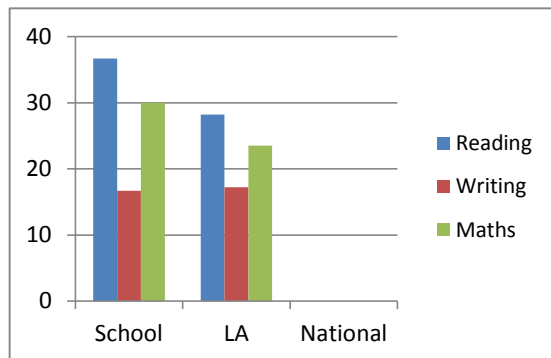
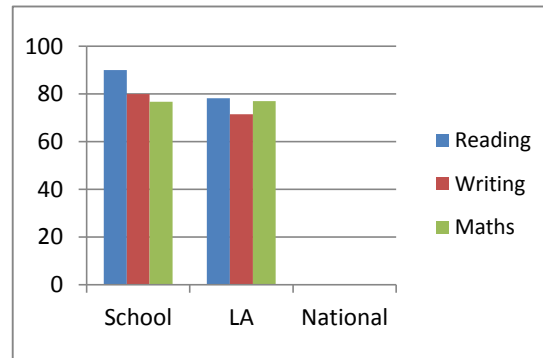


**Key Stage 1 - Headline Figures** **St Mary's RC Primary School** **2016**

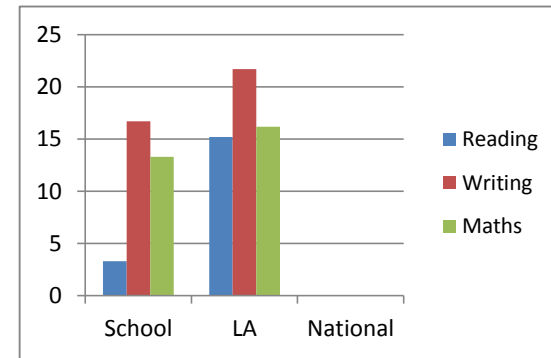
2016	Reading		Writing		Maths		RWM		Science	
% working at greater depth within the expected standard	School	36.7	School	16.7	School	30	School	13.3		
	LA	28.2	LA	17.2	LA	23.5	LA	12.2		
	National		National		National		National			
% working at or above the expected standard	School	90	School	80	School	76.7	School	73.3	School	90
	LA	78.3	LA	71.5	LA	77	LA	67.2	LA	81.4
	National		National		National		National		National	
% working towards the expected standard	School	3.3	School	16.7	School	13.3	School		School	10
	LA	15.2	LA	21.7	LA	16.2	LA	16.2	LA	18.4
	National		National		National		National		National	
% at Foundations for the expected standard (Pre-Key Stage Foundation)	School	3.3	School	3.3	School	10				
	LA	3.6	LA	3.3	LA	3.9				
	National		National		National					
% below the standard of the pre-key stage	School	3.3	School	0	School	0				
	LA	2.7	LA	3.3	LA	2.7				
	National		National		National					



**% working at a greater depth within the expected standard**

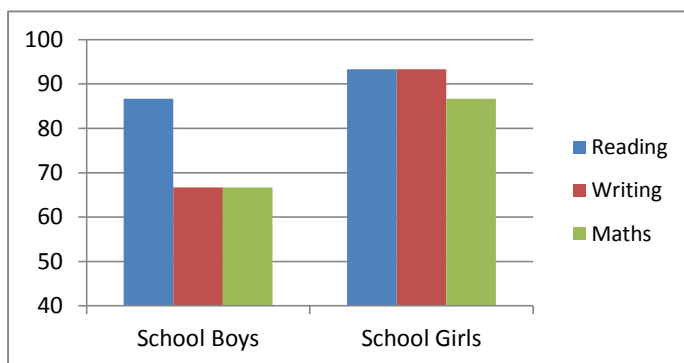


**% working at or above the expected standard**

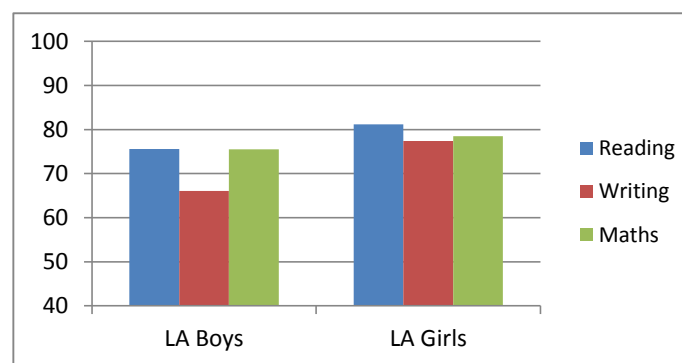


**% working towards the expected standard**

Number of boys: 15 Number of girls: 15	Reading		Writing		Maths	
<b>% working at greater depth within the expected standard</b>	School Boys	33.3	School Boys	13.3	School Boys	33.3
	School Girls	40	School Girls	20	School Girls	26.7
	School gender gap	6.7	School gender gap	6.7	School gender gap	6.6
	LA Boys	24.3	LA Boys	11.5	LA Boys	24.1
	LA Girls	32.5	LA Girls	23.5	LA Girls	22.7
	LA gender gap	8.2	LA gender gap	12	LA gender gap	1.4
<b>% working at or above the expected standard</b>	School Boys	86.7	School Boys	66.7	School Boys	66.7
	School Girls	93.3	School Girls	93.3	School Girls	86.7
	School gender gap	6.6	School gender gap	26.6	School gender gap	20
	LA Boys	75.6	LA Boys	66.1	LA Boys	75.5
	LA Girls	81.2	LA Girls	77.4	LA Girls	78.5
	LA gender gap	5.6	LA gender gap	11.3	LA gender gap	3
<b>% working towards the expected standard</b>	School Boys	6.7	School Boys	33.3	School Boys	26.7
	School Girls	0	School Girls	0	School Girls	0
	School gender gap	6.7	School gender gap	33.3	School gender gap	26.7
	LA Boys	16.1	LA Boys	24.9	LA Boys	16.3
	LA Girls	14.3	LA Girls	18.2	LA Girls	16.2
	LA gender gap	1.8	LA gender gap	6.7	LA gender gap	0.1

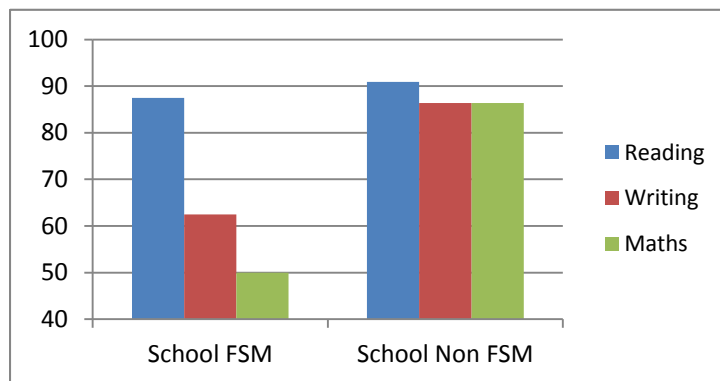


**% working at or above the expected standard (School)**

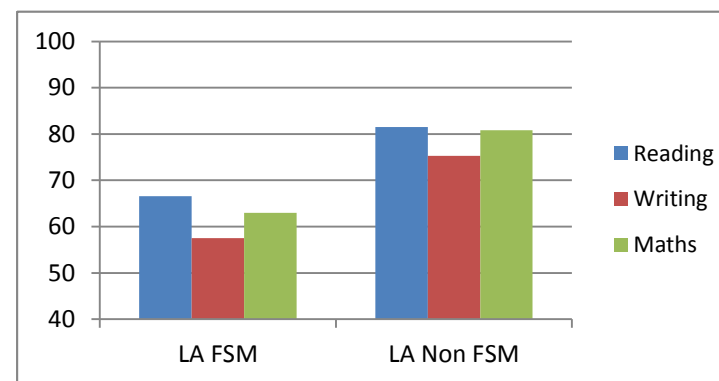


**% working at or above the expected standard (LA)**

Number of FSM: 8 Number of Non FSM: 22	Reading		Writing		Maths	
	<b>% working at greater depth within the expected standard</b>	School FSM	12.5	School FSM	12.5	School FSM
	School Non FSM	45.5	School Non FSM	18.2	School Non FSM	31.8
	School FSM gap	33	School FSM gap	5.7	School FSM gap	6.8
	LA FSM	16.6	LA FSM	8.6	LA FSM	15.7
	LA Non FSM	31.4	LA Non FSM	19.6	LA Non FSM	25.6
	LA FSM gap	14.8	LA FSM gap	11	LA FSM gap	9.9
<b>% working at or above the expected standard</b>	School FSM	87.5	School FSM	62.5	School FSM	50
	School Non FSM	90.9	School Non FSM	86.4	School Non FSM	86.4
	School FSM gap	3.4	School FSM gap	23.9	School FSM gap	36.4
	LA FSM	66.6	LA FSM	57.5	LA FSM	63
	LA Non FSM	81.5	LA Non FSM	75.3	LA Non FSM	80.8
	LA FSM gap	14.9	LA FSM gap	17.8	LA FSM gap	17.8
<b>% working towards the expected standard</b>	School FSM	0	School FSM	25	School FSM	25
	School Non FSM	4.5	School Non FSM	13.6	School Non FSM	9.1
	School FSM gap	-4.5	School FSM gap	11.4	School FSM gap	15.9
	LA FSM	20.4	LA FSM	29.1	LA FSM	24
	LA Non FSM	13.8	LA Non FSM	19.6	LA Non FSM	14.1
	LA FSM gap	6.6	LA FSM gap	9.5	LA FSM gap	9.9

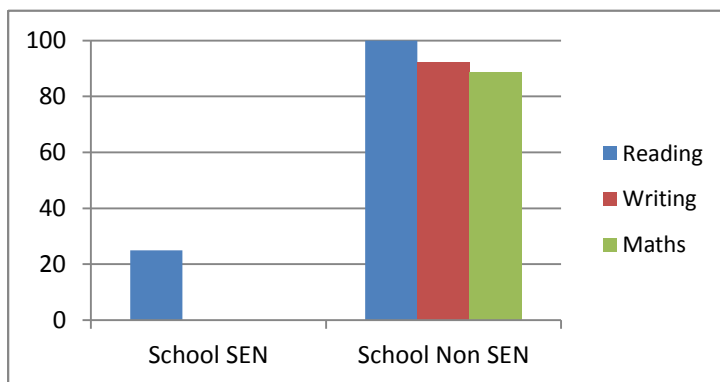


**% working at or above the expected standard (School)**

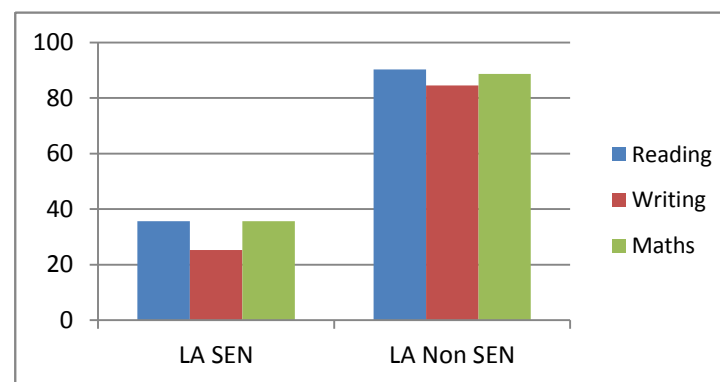


**% working at or above the expected standard (LA)**

Number with SEN: 4 Number Non SEN: 26	Reading		Writing		Maths	
	<b>% working at greater depth within the expected standard</b>	School SEN	0	School SEN	0	School SEN
	School Non SEN	42.3	School Non SEN	19.2	School Non SEN	34.6
	<b>School SEN gap</b>	<b>42.3</b>	<b>School SEN gap</b>	<b>19.2</b>	<b>School SEN gap</b>	<b>34.6</b>
	LA SEN	4.3	LA SEN	1.4	LA SEN	5.7
	LA Non SEN	34.9	LA Non SEN	21.7	LA Non SEN	28.5
	<b>LA SEN gap</b>	<b>30.6</b>	<b>LA SEN gap</b>	<b>20.3</b>	<b>LA SEN gap</b>	<b>22.8</b>
<b>% working at or above the expected standard</b>	School SEN	25	School SEN	0	School SEN	0
	School Non SEN	100	School Non SEN	92.3	School Non SEN	88.5
	<b>School SEN gap</b>	<b>75</b>	<b>School SEN gap</b>	<b>92.3</b>	<b>School SEN gap</b>	<b>88.5</b>
	LA SEN	35.6	LA SEN	25.3	LA SEN	35.6
	LA Non SEN	90.3	LA Non SEN	84.5	LA Non SEN	88.6
	<b>LA SEN gap</b>	<b>54.7</b>	<b>LA SEN gap</b>	<b>59.2</b>	<b>LA SEN gap</b>	<b>53</b>
<b>% working towards the expected standard</b>	School SEN	25	School SEN	75	School SEN	50
	School Non SEN	0	School Non SEN	7.7	School Non SEN	7.7
	<b>School SEN gap</b>	<b>25</b>	<b>School SEN gap</b>	<b>67.3</b>	<b>School SEN gap</b>	<b>42.3</b>
	LA SEN	38	LA SEN	47	LA SEN	36.1
	LA Non SEN	8.8	LA Non SEN	14.6	LA Non SEN	10.6
	<b>LA SEN gap</b>	<b>29.2</b>	<b>LA SEN gap</b>	<b>32.4</b>	<b>LA SEN gap</b>	<b>25.5</b>

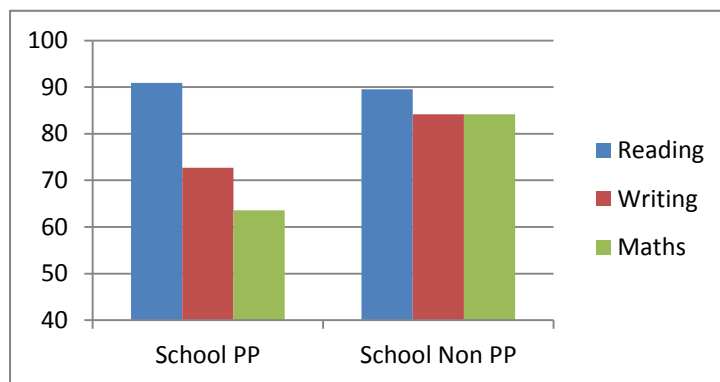


**% working at or above the expected standard (School)**

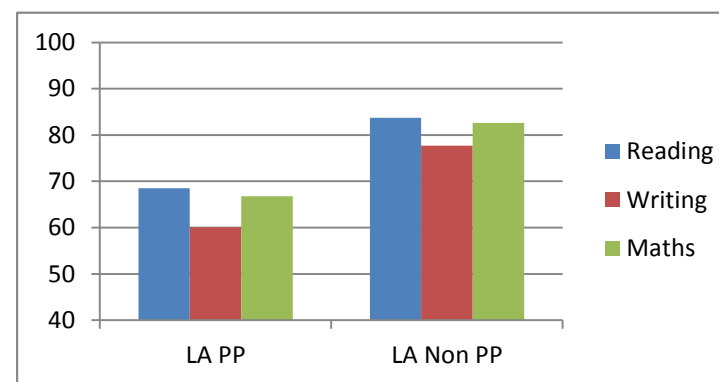


**% working at or above the expected standard (LA)**

Number of Pupil Premium: 11 Number of non Pupil Prem:19	Reading		Writing		Maths	
	School PP	18.2	School PP	9.1	School PP	18.2
<b>% working at greater depth within the expected standard</b>	School Non PP	47.4	School Non PP	21.1	School Non PP	36.8
	School PP gap	<b>29.2</b>	School PP gap	<b>12</b>	School PP gap	<b>18.6</b>
	LA PP	18.4	LA PP	9.9	LA PP	16.4
	LA Non PP	33.6	LA Non PP	21.2	LA Non PP	27.4
	LA PP gap	<b>15.2</b>	LA PP gap	<b>11.3</b>	LA PP gap	<b>11</b>
	<b>% working at the expected standard</b>	School PP	90.9	School PP	72.7	School PP
School Non PP		89.5	School Non PP	84.2	School Non PP	84.2
School PP gap		<b>1.4</b>	School PP gap	<b>11.5</b>	School PP gap	<b>20.6</b>
LA PP		68.5	LA PP	60.1	LA PP	66.8
LA Non PP		83.7	LA Non PP	77.7	LA Non PP	82.6
LA PP gap		<b>15.2</b>	LA PP gap	<b>17.6</b>	LA PP gap	<b>15.8</b>
<b>% working towards the expected standard</b>	School PP	9.1	School PP	27.3	School PP	27.3
	School Non PP	0	School Non PP	10.5	School Non PP	5.3
	School PP gap	<b>9.1</b>	School PP gap	<b>16.8</b>	School PP gap	<b>22</b>
	LA PP	20.8	LA PP	28.6	LA PP	22.3
	LA Non PP	12.2	LA Non PP	17.9	LA Non PP	12.9
	LA PP gap	<b>8.6</b>	LA PP gap	<b>10.7</b>	LA PP gap	<b>9.4</b>



**% working at the expected standard (School)**



**% working at the expected standard (LA)**